

LRP130 antibody

Catalog No: #22766

Orders: order@signalwayantibody.comSupport: tech@signalwayantibody.com

Description

| | |
|-----------------------|--|
| Product Name | LRP130 antibody |
| Host Species | Rabbit |
| Clonality | Polyclonal |
| Purification | Purified by antigen-affinity chromatography. |
| Applications | WB IHC IF |
| Species Reactivity | Hu |
| Immunogen Type | Recombinant protein |
| Immunogen Description | Recombinant protein fragment contain a sequence corresponding to a region within amino acids 611 and 907 of LRP130 |
| Target Name | LRP130 |
| Accession No. | Swiss-Prot:P42704Gene ID:10128 |
| Uniprot | P42704 |
| GeneID | 10128; |
| Concentration | 1mg/ml |
| Formulation | Supplied in 0.1M Tris-buffered saline with 10% Glycerol (pH7.0). 0.01% Thimerosal was added as a preservative. |
| Storage | Store at -20°C for long term preservation (recommended). Store at 4°C for short term use. |

Application Details

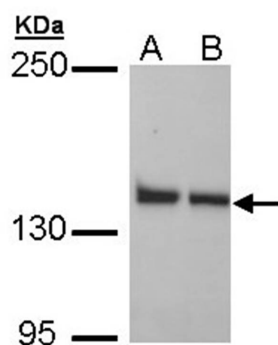
Predicted MW: 158kd

Western blotting: 1:500-1:3000

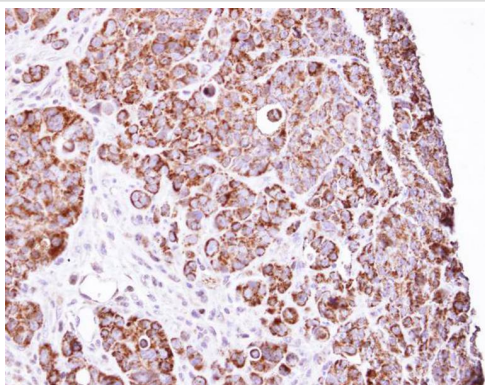
Immunohistochemistry: 1:100-1:500

Immunofluorescence: 1:100-1:200

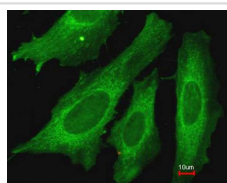
Images



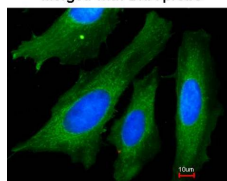
Sample (30 ug of whole cell lysate)
A: H1299
B: HeLa
5% SDS PAGE
Primary antibody diluted at 1: 1000



Immunohistochemical analysis of paraffin-embedded SW480 Xenograft, using LRP130 antibody at 1: 100 dilution.



Merged with DNA probe



Immunofluorescence analysis of paraformaldehyde-fixed HeLa, using LRP130 antibody at 1: 200 dilution.

Background

This gene encodes a protein that is leucine-rich and is thought to play a role in regulating the interaction of the cytoskeleton with a variety of cellular processes. Mutations in this gene are associated with the French-Canadian type of Leigh syndrome. Transcripts ranging in size from 4.8 to 7.0 kb which result from alternative polyadenylation have been reported for this gene. [provided by RefSeq]

Note: This product is for in vitro research use only