

C-C motif chemokine 2 Polyclonal Antibody

Catalog No: #42442

Orders: order@signalwayantibody.com

Support: tech@signalwayantibody.com

Description

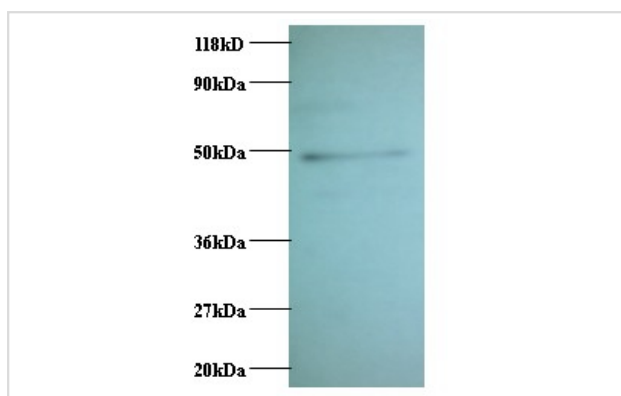
Product Name	C-C motif chemokine 2 Polyclonal Antibody
Host Species	Rabbit
Clonality	Polyclonal
Purification	Caprylic Acid Ammonium Sulfate Precipitation purified
Applications	WB IHC
Species Reactivity	Hu
Specificity	The antibody detects endogenous level of total C-C motif chemokine 2 polyclonal antibody.
Immunogen Type	protein
Immunogen Description	Recombinant human C-C motif chemokine 2 protein
Target Name	C-C motif chemokine 2
Other Names	CCL2
Accession No.	Swiss-Prot#: P13500
Uniprot	P13500
GeneID	6347;
Calculated MW	11kd
Formulation	Preservative: 0.03% Proclin 300 Constituents: 50% Glycerol, 0.01M PBS, PH 7.4
Storage	Store at -20°C

Application Details

Western blotting: □1:500 - 1:1000

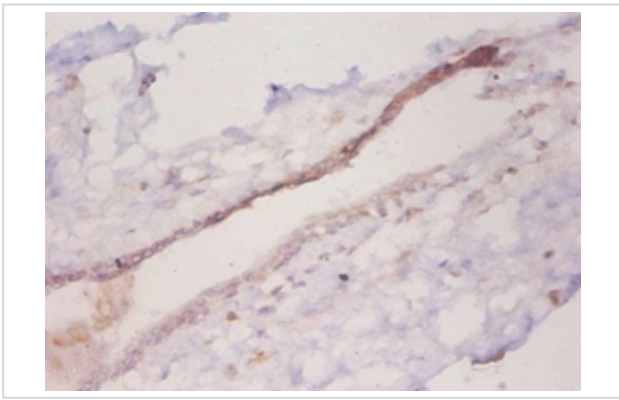
Immunohistochemistry: 1:20 - 1:200

Images



C-C motif chemokine 2 Antibody at 2ug/ml + EC109 whole cell lysate at 20 ug

Secondary
Goat polyclonal to Rabbit IgG at 1/15000 dilutionPredicted band size : 11kDa
Observed band size : 50 kDa



Immunohistochemical analysis of paraffin-embedded human mammary gland using #42442 at dilution of 1:50 .

Background

Chemotactic factor that attracts monocytes and basophils but not neutrophils or eosinophils. Augments monocyte anti-tumor activity. Has been implicated in the pathogenesis of diseases characterized by monocytic infiltrates, like psoriasis, rheumatoid arthritis or atherosclerosis. May be involved in the recruitment of monocytes into the arterial wall during the disease process of atherosclerosis.

References

[1]"Cloning and sequencing of the cDNA for human monocyte chemotactic and activating factor (MCAF)." Furutani Y., Nomura H., Notake M., Oyamada Y., Fukui T., Yamada M., Larsen C.G., Oppenheim J.J., Matsushima K. *Biochem. Biophys. Res. Commun.* 159:249-25

Note: This product is for in vitro research use only