

C-C motif chemokine 22 Polyclonal Antibody

Catalog No: #42443

Orders: order@signalwayantibody.com

Support: tech@signalwayantibody.com

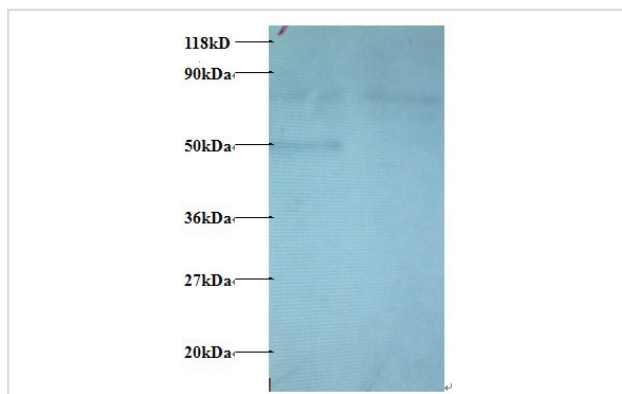
Description

Product Name	C-C motif chemokine 22 Polyclonal Antibody
Host Species	Rabbit
Clonality	Polyclonal
Purification	Caprylic Acid Ammonium Sulfate Precipitation purified
Applications	WB
Species Reactivity	Hu
Specificity	The antibody detects endogenous level of total C-C motif chemokine 22 polyclonal antibody.
Immunogen Type	protein
Immunogen Description	Recombinant human C-C motif chemokine 22 protein
Target Name	C-C motif chemokine 22
Other Names	CCL22
Accession No.	Swiss-Prot#: O00626
Uniprot	O00626
GeneID	6367;
Calculated MW	10kd
Formulation	Preservative: 0.03% Proclin 300 Constituents: 50% Glycerol, 0.01M PBS, PH 7.4
Storage	Store at -20°C

Application Details

Western blotting: □1:500 - 1:1000

Images



All lanes : C-C motif chemokine 22 antibody at at 2ug/ml

Lane 1 : 293T whole cell lysate

Lane 2 : EC109 whole cell lysate

Secondary

Goat polyclonal to Rabbit IgG at 1/15000 dilution

Predicted band size : 10 kDa

Observed band size: 50 kDa

Additional bands at : 80 kDa. We are unsure as to the identity of this extra band.

Background

May play a role in the trafficking of activated/effector T-lymphocytes to inflammatory sites and other aspects of activated T-lymphocyte physiology. Chemotactic for monocytes, dendritic cells and natural killer cells. Mild chemoattractant for primary activated T-lymphocytes and a potent chemoattractant for chronically activated T-lymphocytes but has no chemoattractant activity for neutrophils, eosinophils, and resting T-lymphocytes. Binds to CCR4. Processed forms MDC(3-69), MDC(5-69) and MDC(7-69) seem not be active.

References

[1] "Molecular cloning and functional characterization of a novel CC chemokine, stimulated T cell chemotactic protein (STCP-1) that specifically acts on activated T lymphocytes." Chang M.-S., McNinch J., Elias C. III, Manthey C.L., Grosshans D., Meng T., B

Note: This product is for in vitro research use only