

Clusterin Polyclonal Antibody

Catalog No: #42447

Orders: order@signalwayantibody.com

Support: tech@signalwayantibody.com

Description

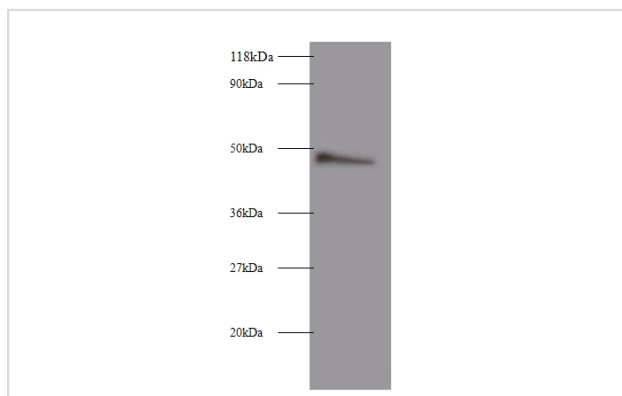
Product Name	Clusterin Polyclonal Antibody
Host Species	Rabbit
Clonality	Polyclonal
Purification	Caprylic Acid Ammonium Sulfate Precipitation purified
Applications	WB IHC
Species Reactivity	Hu
Specificity	The antibody detects endogenous level of total Clusterin polyclonal antibody.
Immunogen Type	protein
Immunogen Description	Recombinant human Clusterin protein
Target Name	Clusterin
Other Names	AAG4, APOJ, CLI, KUB1, CLU, Aging-associated gene 4 protein, Apolipoprotein J, Apo-J, Complement cytolysis inhibitor, CLI, Complement-associated protein SP-40, 40, Ku70-binding protein 1, NA1/NA2, Testosterone-repressed prostate message 2, TRPM-2
Accession No.	Swiss-Prot#: P10909
Uniprot	P10909
GeneID	1191;
Calculated MW	49kd
Formulation	Preservative: 0.03% Proclin 300 Constituents: 50% Glycerol, 0.01M PBS, PH 7.4
Storage	Store at -20°C

Application Details

Western blotting: □1:500 - 1:1000

Immunohistochemistry: 1:20 - 1:200

Images



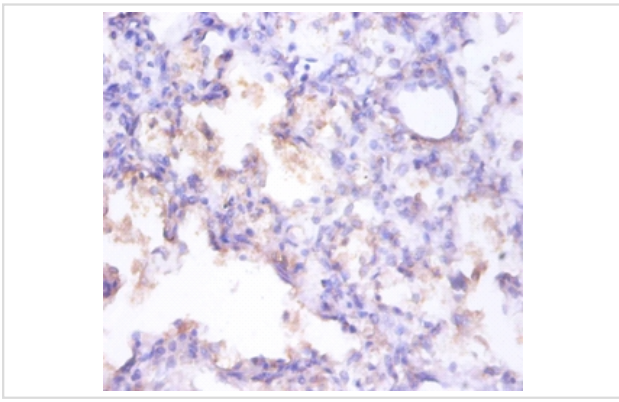
All lanes : Clusterin antibody at 2ug/ml+293T whole cell lysate

Secondary

Goat polyclonal to Rabbit IgG at 1/10000 dilution

Predicted band size : 49 kDa

Observed band size: 49 kDa



Immunohistochemical analysis of paraffin-embedded human prostate using #42447 at dilution of 1:100.

Background

Isoform 1 functions as extracellular chaperone that prevents aggregation of nonnative proteins. Prevents stress-induced aggregation of blood plasma proteins. Inhibits formation of amyloid fibrils by APP, APOC2, B2M, CALCA, CSN3, SNCA and aggregation-prone LYZ variants (in vitro). Does not require ATP. Maintains partially unfolded proteins in a state appropriate for subsequent refolding by other chaperones, such as HSPA8/HSC70. Does not refold proteins by itself. Binding to cell surface receptors triggers internalization of the chaperone-client complex and subsequent lysosomal or proteasomal degradation. Secreted isoform 1 protects cells against apoptosis and against cytolysis by complement. Intracellular isoforms interact with ubiquitin and SCF (SKP1-CUL1-F-box protein) E3 ubiquitin-protein ligase complexes and promote the ubiquitination and subsequent proteasomal degradation of target proteins. Promotes proteasomal degradation of COMMD1 and IKBKB. Modulates NF-kappa-B transcriptional activity. Nuclear isoforms promote apoptosis. Mitochondrial isoforms suppress BAX-dependent release of cytochrome c into the cytoplasm and inhibit apoptosis. Plays a role in the regulation of cell proliferation.

References

[1] "Molecular structure and functional characterization of a human complement cytolysis inhibitor found in blood and seminal plasma: identity to sulfated glycoprotein 2, a constituent of rat testis fluid."Jenne D.E., Tschopp J.Proc. Natl. Acad. Sci. U.S.

Note: This product is for in vitro research use only