

C-reactive protein Polyclonal Antibody

Catalog No: #42449

Orders: order@signalwayantibody.com

Support: tech@signalwayantibody.com

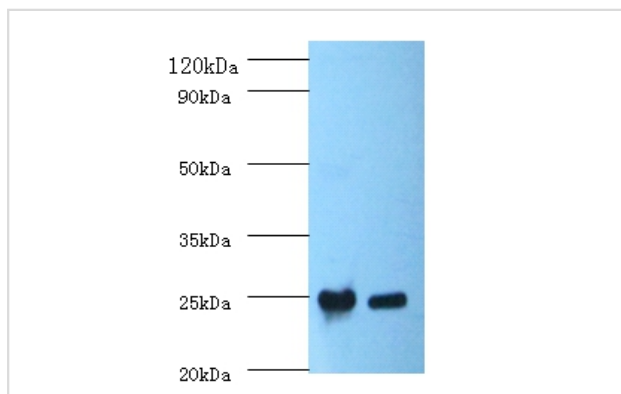
Description

| | |
|-----------------------|--|
| Product Name | C-reactive protein Polyclonal Antibody |
| Host Species | Rabbit |
| Clonality | Polyclonal |
| Purification | Caprylic Acid Ammonium Sulfate Precipitation purified |
| Applications | WB IHC |
| Species Reactivity | Hu |
| Specificity | The antibody detects endogenous level of total C-reactive protein polyclonal antibody. |
| Immunogen Type | protein |
| Immunogen Description | Recombinant human C-reactive protein protein |
| Target Name | C-reactive protein |
| Other Names | CRP PTX1 |
| Accession No. | Swiss-Prot#: P02741 |
| Uniprot | P02741 |
| GeneID | 1401; |
| Calculated MW | 25kd |
| Formulation | Preservative: 0.03% Proclin 300 Constituents: 50% Glycerol, 0.01M PBS, PH 7.4 |
| Storage | Store at -20°C |

Application Details

Western blotting: □ 1:500 - 1:1000

Images



All lanes : C-reactive protein antibody at 2mg/ml+positive serum

Lane 1 : positive serum at 1:5

Lane 2 : positive serum at 1:10

Secondary

Goat polyclonal to Rabbit IgG at 1/10000 dilution

Predicted band size :25kDa

Observed band size:25kDa

Background

CRP2 is a novel substrate of cGKI in neurons and smooth muscle of the small intestine.

References

[1]Cloning and characterization of the gene for rabbit C-reactive protein.Hu S.-I., Miller S.M., Samols D.Biochemistry 25:7834-7839(1986) [2]Rabbit C-reactive protein. Biosynthesis and characterization of cDNA clones.Syin C., Gotschlich E.C., Liu T.-Y.J

Note: This product is for in vitro research use only