

Interleukin-12 subunit beta Polyclonal Antibody

Catalog No: #42461

Orders: order@signalwayantibody.com

Support: tech@signalwayantibody.com

Description

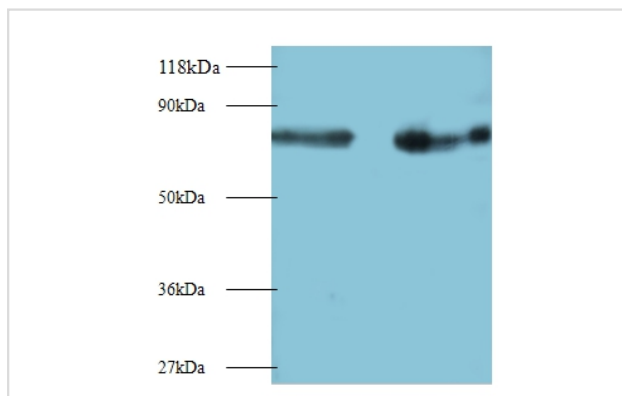
Product Name	Interleukin-12 subunit beta Polyclonal Antibody
Host Species	Rabbit
Clonality	Polyclonal
Purification	Caprylic Acid Ammonium Sulfate Precipitation purified
Applications	WB IHC
Species Reactivity	Hu
Specificity	The antibody detects endogenous level of total Interleukin-12 subunit beta polyclonal antibody.
Immunogen Type	protein
Immunogen Description	Recombinant human Interleukin-12 subunit beta protein
Target Name	Interleukin-12 subunit beta
Other Names	NKSF2, IL12B, Cytotoxic lymphocyte maturation factor 40 kDa subunit, CLMF p40, IL-12 subunit p40, NK cell stimulatory factor chain 2, NKSF2
Accession No.	Swiss-Prot#: P29460
Uniprot	P29460
GeneID	3593;
Calculated MW	72kd
Formulation	Preservative: 0.03% Proclin 300 Constituents: 50% Glycerol, 0.01M PBS, PH 7.4
Storage	Store at -20°C

Application Details

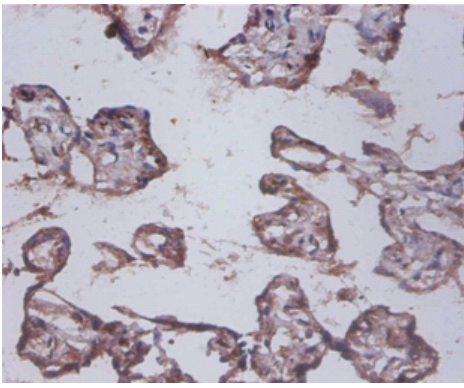
Western blotting: □ 1:500 - 1:1000

Immunohistochemistry: 1:20 - 1:200

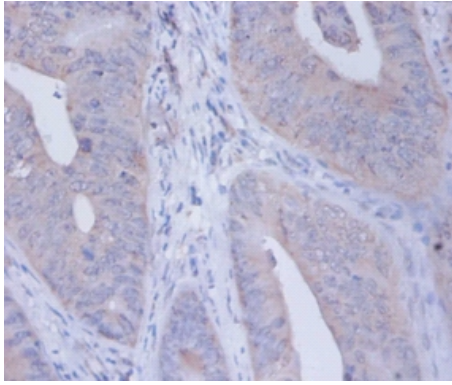
Images



All lanes : Interleukin-12 subunit beta antibody at 2ug/ml
 Lane 1 : EC109 whole cell lysate
 Lane 2 : 293T whole cell lysate
 Secondary
 Goat polyclonal to Rabbit IgG at 1/15000 dilution
 Predicted band size : 72 kDa
 Observed band size: 72 kDa



Immunohistochemical analysis of paraffin-embedded human placenta using #42461 at dilution of 1:100.



Immunohistochemical analysis of paraffin-embedded human colorectal carcinoma using #42461 at dilution of 1:100.

Background

Cytokine that can act as a growth factor for activated T and NK cells, enhance the lytic activity of NK/lymphokine-activated killer cells, and stimulate the production of IFN-gamma by resting PBMC. Ref.12 Associates with IL23A to form the IL-23 interleukin, a heterodimeric cytokine which functions in innate and adaptive immunity. IL-23 may constitute with IL-17 an acute response to infection in peripheral tissues. IL-23 binds to a heterodimeric receptor complex composed of IL12RB1 and IL23R, activates the Jak-Stat signaling cascade, stimulates memory rather than naive T-cells and promotes production of proinflammatory cytokines. IL-23 induces autoimmune inflammation and thus may be responsible for autoimmune inflammatory diseases and may be important for tumorigenesis.

References

[1] "Molecular cloning of a cDNA encoding interleukin 11, a stromal cell-derived lymphopoietic and hematopoietic cytokine." Paul S.R., Bennett F., Calvetti J.A., Kelleher K., Wood C.R., O'Hara R.M. Jr., Leary A.C., Sibley B.S., Clark S.C., Williams D.A., Y

Note: This product is for in vitro research use only