

Cysteine and glycine-rich protein 2 Polyclonal Antibody

Catalog No: #42470

Orders: order@signalwayantibody.comSupport: tech@signalwayantibody.com

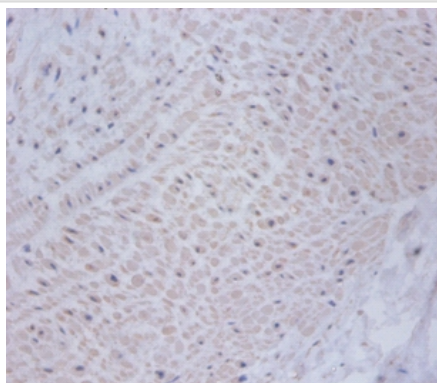
Description

Product Name	Cysteine and glycine-rich protein 2 Polyclonal Antibody
Host Species	Rabbit
Clonality	Polyclonal
Purification	Caprylic Acid Ammonium Sulfate Precipitation purified
Applications	IHC
Species Reactivity	Hu
Specificity	The antibody detects endogenous level of total Cysteine and glycine-rich protein 2 polyclonal antibody.
Immunogen Type	protein
Immunogen Description	Recombinant human Cysteine and glycine-rich protein 1 protein
Target Name	Cysteine and glycine-rich protein 2
Other Names	CSRP1
Accession No.	Swiss-Prot#: P21291
Uniprot	P21291
GenelD	1465;
Formulation	Preservative: 0.03% Proclin 300 Constituents: 50% Glycerol, 0.01M PBS, PH 7.4
Storage	Store at -20°C

Application Details

Immunohistochemistry: 1:20 - 1:200

Images



Immunohistochemical analysis of paraffin-embedded human umbilical cord using #42470 at dilution of 1:100.

Background

Drastically down-regulated in response to PDGF-BB or cell injury, that promote smooth muscle cell proliferation and dedifferentiation. Seems to play a role in the development of the embryonic vascular system.

References

[1] "Molecular cloning and characterization of SmLIM, a developmentally regulated LIM protein preferentially expressed in aortic smooth muscle cells."
Jain M., Fujita K.P., Hsieh C.-M., Endege W.O., Sibinga N.E.S., Yet S.-F., Kashiki S., Lee W.-S., Perre

Note: This product is for in vitro research use only