

# Cathepsin B Polyclonal Antibody

Catalog No: #42471

Orders: [order@signalwayantibody.com](mailto:order@signalwayantibody.com)Support: [tech@signalwayantibody.com](mailto:tech@signalwayantibody.com)

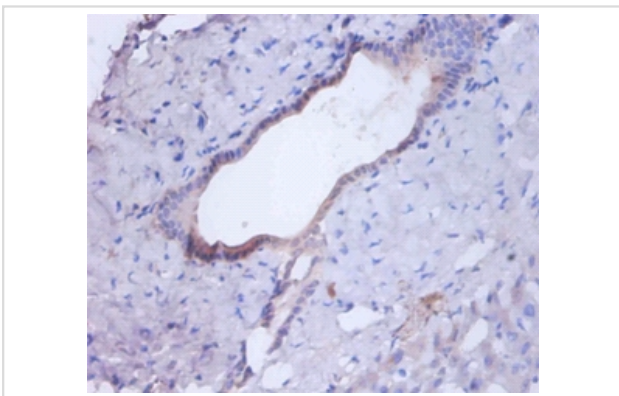
## Description

Product Name	Cathepsin B Polyclonal Antibody
Host Species	Rabbit
Clonality	Polyclonal
Purification	Caprylic Acid Ammonium Sulfate Precipitation purified
Applications	IHC
Species Reactivity	Hu
Specificity	The antibody detects endogenous level of total Cathepsin B polyclonal antibody.
Immunogen Type	protein
Immunogen Description	Recombinant human Cathepsin B protein
Target Name	Cathepsin B
Other Names	CSNK2B
Accession No.	Swiss-Prot#: P07858
Uniprot	P07858
GeneID	1508;
Formulation	Preservative: 0.03% Proclin 300 Constituents: 50% Glycerol, 0.01M PBS, PH 7.4
Storage	Store at -20°C

## Application Details

Immunohistochemistry: 1:20 - 1:200

## Images



Immunohistochemical analysis of paraffin-embedded human liver using #42471 at dilution of 1:100 .

## Background

Thiol protease which is believed to participate in intracellular degradation and turnover of proteins. Has also been implicated in tumor invasion and metastasis.

## References

---

[1] "Nucleotide and predicted amino acid sequences of cloned human and mouse preprocathepsin B cDNAs." Chan S.J., San Segundo B., McCormick M.B., Steiner D.F. Proc. Natl. Acad. Sci. U.S.A. 83:7721-7725(1986) [PubMed: 3463996] [Abstract] Cited for: NUCL

---

Note: This product is for in vitro research use only