

Alpha-synuclein Polyclonal Antibody

Catalog No: #42472

Orders: order@signalwayantibody.com

Support: tech@signalwayantibody.com

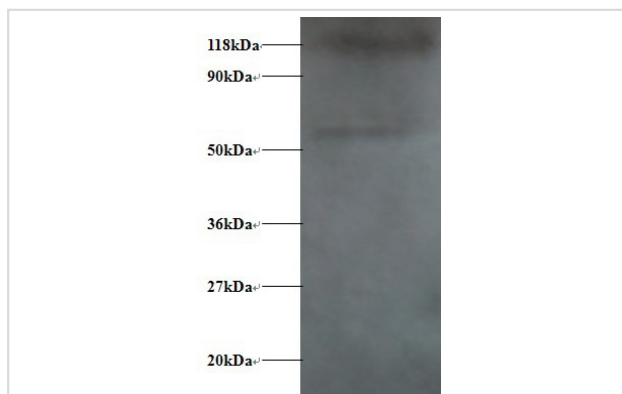
Description

Product Name	Alpha-synuclein Polyclonal Antibody
Host Species	Rabbit
Clonality	Polyclonal
Purification	Caprylic Acid Ammonium Sulfate Precipitation purified
Applications	WB
Species Reactivity	Hu
Specificity	The antibody detects endogenous level of total Alpha-synuclein polyclonal antibody.
Immunogen Type	protein
Immunogen Description	Recombinant human Alpha-synuclein protein
Target Name	Alpha-synuclein
Other Names	Non-A beta component of AD amyloid, Non-A4 component of amyloid precursor, NACP, PARK1, SNCA
Accession No.	Swiss-Prot#: P37840
Uniprot	P37840
GeneID	6622;
Calculated MW	16kd
Formulation	Preservative: 0.03% Proclin 300 Constituents: 50% Glycerol, 0.01M PBS, PH 7.4
Storage	Store at -20°C

Application Details

Western blotting: □ 1:500 - 1:1000

Images



Alpha-synuclein antibody at 2ug/ml+293T whole cell lysate
 SecondaryGoat polyclonal to Rabbit IgG at 1/15000 dilution
 Predicted band size : 16 kDa
 Observed band size: 55 kDa
 Additional bands at : 118kDa. We are unsure as to the identity of these extra band.

Background

May be involved in the regulation of dopamine release and transport. Induces fibrillization of microtubule-associated protein tau. Reduces neuronal responsiveness to various apoptotic stimuli, leading to a decreased caspase-3 activation.

References

[1] "Molecular cloning of cDNA encoding an unrecognized component of amyloid in Alzheimer disease." Ueda K., Fukushima H., Masliah E., Xia Y., Iwai A., Yoshimoto M., Otero D.A., Kondo J., Ihara Y., Saitoh T. Proc. Natl. Acad. Sci. U.S.A. 90:11282-11286(

Note: This product is for in vitro research use only