

## Antileukoproteinase Polyclonal Antibody

Catalog No: #42477

Orders: [order@signalwayantibody.com](mailto:order@signalwayantibody.com)Support: [tech@signalwayantibody.com](mailto:tech@signalwayantibody.com)

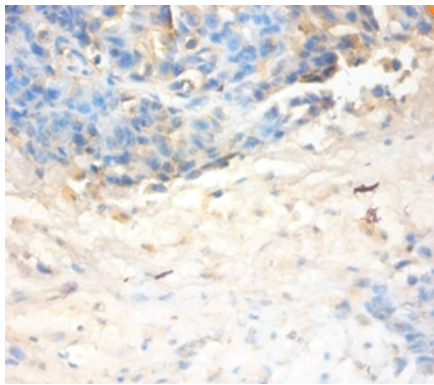
## Description

Product Name	Antileukoproteinase Polyclonal Antibody
Host Species	Rabbit
Clonality	Polyclonal
Purification	Caprylic Acid Ammonium Sulfate Precipitation purified
Applications	IHC
Species Reactivity	Hu
Specificity	The antibody detects endogenous level of total Antileukoproteinase polyclonal antibody.
Immunogen Type	protein
Immunogen Description	Recombinant human Antileukoproteinase protein
Target Name	Antileukoproteinase
Other Names	SLPI
Accession No.	Swiss-Prot#: P03973
Uniprot	P03973
GeneID	6590;
Formulation	Preservative: 0.03% Proclin 300 Constituents: 50% Glycerol, 0.01M PBS, PH 7.4
Storage	Store at -20°C

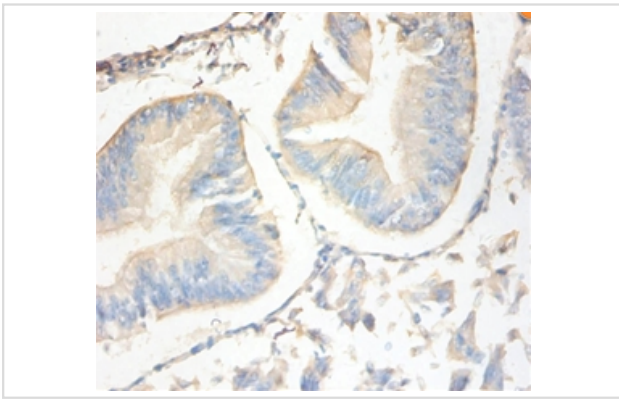
## Application Details

Immunohistochemistry: 1:20 - 1:200

## Images



Immunohistochemical analysis of paraffin-embedded human ovarian cancer using #42477 at dilution of 1:100.



Immunohistochemical analysis of paraffin-embedded human endometrial carcinoma using #42477 at dilution of 1:100.

## Background

Acid-stable proteinase inhibitor with strong affinities for trypsin, chymotrypsin, elastase, and cathepsin G. May prevent elastase-mediated damage to oral and possibly other mucosal tissues.

## References

[1] "Molecular cloning and expression of cDNA for human antileukoprotease from cervix uterus."Heinzel R., Appelhans H., Gassen G., Seemueller U., Machleidt W., Fritz H., Steffens G.Eur. J. Biochem. 160:61-67(1986) [PubMed: 3533531] [Abstract]Cited for: NU

Note: This product is for in vitro research use only