

Vascular cell adhesion protein 1 Polyclonal Antibody

Catalog No: #42485

Orders: order@signalwayantibody.comSupport: tech@signalwayantibody.com

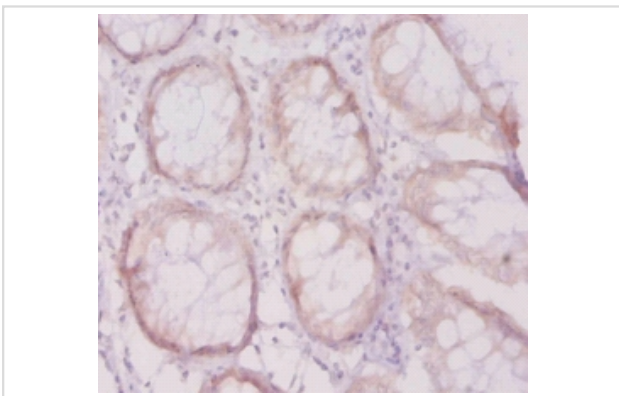
Description

Product Name	Vascular cell adhesion protein 1 Polyclonal Antibody
Host Species	Rabbit
Clonality	Polyclonal
Purification	Caprylic Acid Ammonium Sulfate Precipitation purified
Applications	IHC
Species Reactivity	Hu
Specificity	The antibody detects endogenous level of total Vascular cell adhesion protein 1 polyclonal antibody.
Immunogen Type	protein
Immunogen Description	Recombinant human Vascular cell adhesion protein 1 protein
Target Name	Vascular cell adhesion protein 1
Other Names	INCAM-100, CD_antigen=CD106 VCAM1, L1CAM
Accession No.	Swiss-Prot#: P19320
Uniprot	P19320
GeneID	7412;
Formulation	Preservative: 0.03% Proclin 300 Constituents: 50% Glycerol, 0.01M PBS, PH 7.4
Storage	Store at -20°C

Application Details

Immunohistochemistry: 1:20 - 1:200

Images



Immunohistochemical analysis of paraffin-embedded human colon cancer using #42485 at dilution of 1:20.

Background

Important in cell-cell recognition. Appears to function in leukocyte-endothelial cell adhesion. Interacts with integrin alpha-4/beta-1 (ITGA4/ITGB1) on leukocytes, and mediates both adhesion and signal transduction. The VCAM1/ITGA4/ITGB1 interaction may play a pathophysiologic role both in immune responses and in leukocyte emigration to sites of inflammation.

References

[1]Direct expression cloning of vascular cell adhesion molecule 1, a cytokine-induced endothelial protein that binds to lymphocytes.Osborn L., Hession C., Tizard R., Vassallo C., Lühowskyj S., Chi-Rosso G., Lobb R.Cell 59:1203-1211(1989) [2]Full length

Note: This product is for in vitro research use only