

Peptidyl-prolyl cis-trans isomerase A Polyclonal Antibody

Catalog No: #42494

Orders: order@signalwayantibody.comSupport: tech@signalwayantibody.com

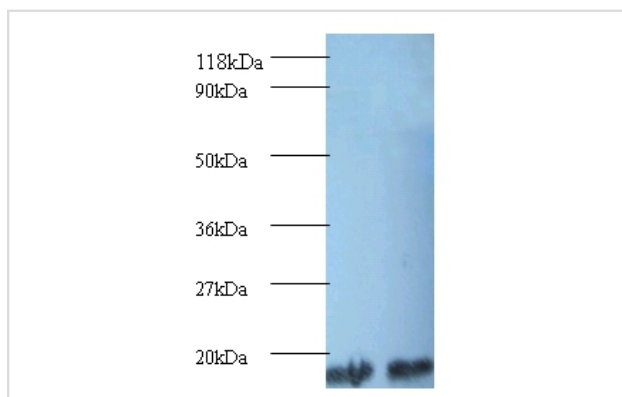
Description

| | |
|-----------------------|---|
| Product Name | Peptidyl-prolyl cis-trans isomerase A Polyclonal Antibody |
| Host Species | Rabbit |
| Clonality | Polyclonal |
| Purification | Caprylic Acid Ammonium Sulfate Precipitation purified |
| Applications | WB |
| Species Reactivity | Hu Ms Rt |
| Specificity | The antibody detects endogenous level of total Peptidyl-prolyl cis-trans isomerase A polyclonal antibody. |
| Immunogen Type | protein |
| Immunogen Description | Recombinant human Peptidyl-prolyl cis-trans isomerase A protein |
| Target Name | Peptidyl-prolyl cis-trans isomerase A |
| Other Names | CYPA, PPIA, Cyclophilin A Cyclosporin A-binding protein Rotamase A |
| Accession No. | Swiss-Prot#: P62937 |
| Uniprot | P62937 |
| GeneID | 5478; |
| Calculated MW | 18kd |
| Formulation | Preservative: 0.03% Proclin 300 Constituents: 50% Glycerol, 0.01M PBS, PH 7.4 |
| Storage | Store at -20°C |

Application Details

Western blotting: □ 1:500 - 1:1000

Images



All lanes : Peptidyl-prolyl cis-trans isomerase A antibody at 2ug/ml
 Lane 1 : 293T whole cell lysate
 Lane 2 : EC109 whole cell lysate
 Secondary Goat polyclonal to Rabbit IgG at 1/15000 dilution
 Predicted band size : 18kDa
 Observed band size: 18kDa

Background

PPIases accelerate the folding of proteins. It catalyzes the cis-trans isomerization of proline imidic peptide bonds in oligopeptides.

References

[1] "Complementary DNA for human T-cell cyclophilin."Haendler B., Hofer-Warbinek R., Hofer E.EMBO J. 6:947-950(1987) [2] "Characterization of the human cyclophilin gene and of related processed pseudogenes."Haendler B., Hofer E.Eur. J. Biochem. 190:477-

Note: This product is for in vitro research use only