

Calmodulin Polyclonal Antibody

Catalog No: #42501

Orders: order@signalwayantibody.com

Support: tech@signalwayantibody.com

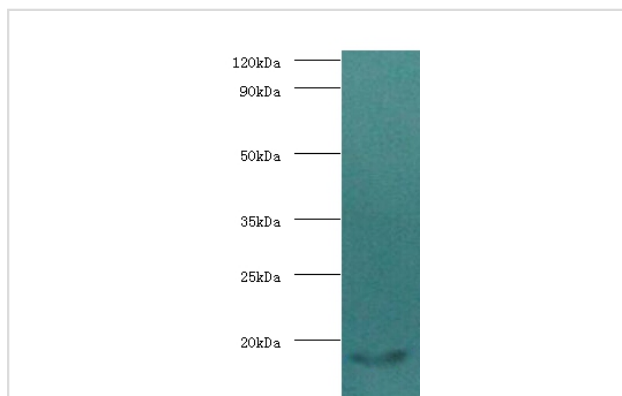
Description

Product Name	Calmodulin Polyclonal Antibody
Host Species	Rabbit
Clonality	Polyclonal
Purification	Caprylic Acid Ammonium Sulfate Precipitation purified
Applications	WB
Species Reactivity	Hu Ms
Specificity	The antibody detects endogenous level of total Calmodulin polyclonal antibody.
Immunogen Type	protein
Immunogen Description	Recombinant human Calmodulin protein
Target Name	Calmodulin
Other Names	CaM, CALM1, CALM, CAM, CAM1, CALM2, CAM2, CAMB, CALM3, CALML2, CAM3, CAMC, CAMIII
Accession No.	Swiss-Prot:P62158Gene ID:801
Uniprot	P62158
GeneID	801;
Calculated MW	17kd
Formulation	Preservative: 0.03% Proclin 300 Constituents: 50% Glycerol, 0.01M PBS, PH 7.4
Storage	Store at -20°C

Application Details

Western blotting: 1:500 - 1:1000

Images



All lanes: Calmodulin antibody at 2ug/ml+mouse skeletal muscle tissue
secondary
Goat polyclonal to rabbit at 1/10000 dilution
predicted band size :17kDa
observed band size :17kDa

Background

Calmodulin mediates the control of a large number of enzymes, ion channels, aquaporins and other proteins by Ca²⁺. Among the enzymes to be stimulated by the calmodulin-Ca²⁺ complex are a number of protein kinases and phosphatases. Together with CCP110 and centrin, is involved in a genetic pathway that regulates the centrosome cycle and progression through cytokinesis.

References

[1]"Mutations in calmodulin cause ventricular tachycardia and sudden cardiac death."Nyegaard M., Overgaard M.T., Sondergaard M.T., Vranas M., Behr E.R., Hildebrandt L.L., Lund J., Hedley P.L., Camm A.J., Wettrell G., Fosdal I., Christiansen M., Borglum A.D

Note: This product is for in vitro research use only