

Bone morphogenetic protein 2 Polyclonal Antibody

Catalog No: #42505

Orders: order@signalwayantibody.comSupport: tech@signalwayantibody.com

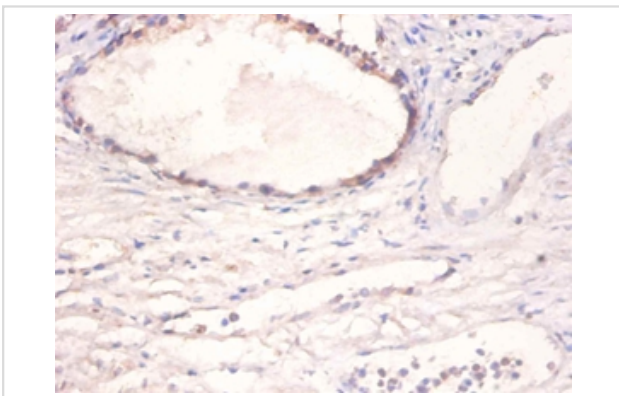
Description

| | |
|-----------------------|--|
| Product Name | Bone morphogenetic protein 2 Polyclonal Antibody |
| Host Species | Rabbit |
| Clonality | Polyclonal |
| Purification | Caprylic Acid Ammonium Sulfate Precipitation purified |
| Applications | IHC |
| Species Reactivity | Hu |
| Specificity | The antibody detects endogenous level of total Bone morphogenetic protein 2 polyclonal antibody. |
| Immunogen Type | protein |
| Immunogen Description | Recombinant human Bone morphogenetic protein 2 protein |
| Target Name | Bone morphogenetic protein 2 |
| Other Names | Bone morphogenetic protein 2A, BMP2, BMP2A |
| Accession No. | Swiss-Prot#: P12643 |
| Uniprot | P12643 |
| GeneID | 650; |
| Formulation | Preservative: 0.03% Proclin 300 Constituents: 50% Glycerol, 0.01M PBS, PH 7.4 |
| Storage | Store at -20°C |

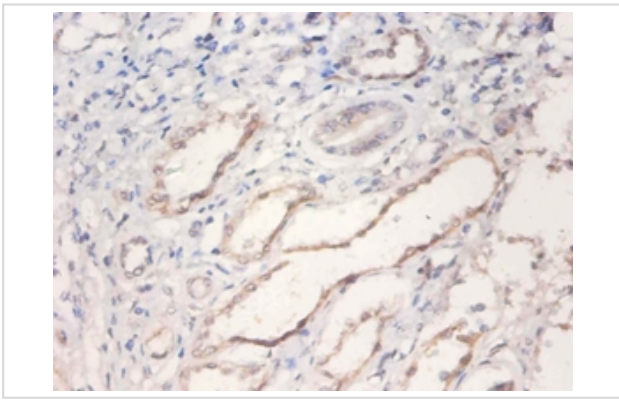
Application Details

Immunohistochemistry: 1:20 - 1:200

Images



Immunohistochemical analysis of paraffin-embedded human prostate using #42505 at dilution of 1:100.



Immunohistochemical analysis of paraffin-embedded human kidney using #42505 at dilution of 1:100.

Background

Induces cartilage and bone formation.

References

[1] "Novel regulators of bone formation: molecular clones and activities." Wozney J.M., Rosen V., Celeste A.J., Mitsock L.M., Whitters M.J., Kriz R.W., Hewick R.M., Wang E.A. *Science* 242:1528-1534(1988) [2] "Human bone morphogenetic prot

Note: This product is for in vitro research use only