

Connective tissue growth factor Polyclonal Antibody

Catalog No: #42506

Orders: order@signalwayantibody.comSupport: tech@signalwayantibody.com

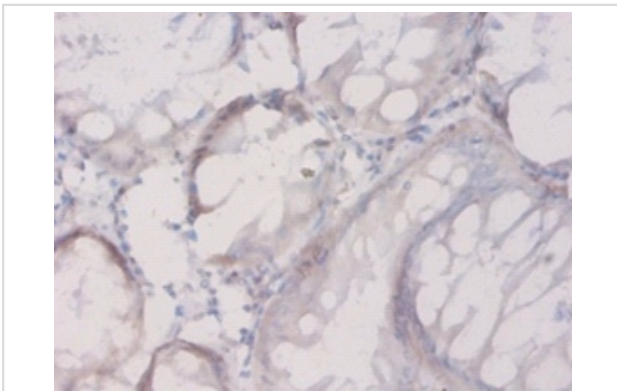
Description

Product Name	Connective tissue growth factor Polyclonal Antibody
Host Species	Rabbit
Clonality	Polyclonal
Purification	Caprylic Acid Ammonium Sulfate Precipitation purified
Applications	IHC
Species Reactivity	Hu
Specificity	The antibody detects endogenous level of total Connective tissue growth factor polyclonal antibody.
Immunogen Type	protein
Immunogen Description	Recombinant human Connective tissue growth factor protein
Target Name	Connective tissue growth factor
Other Names	CCN family member 2, Hypertrophic chondrocyte-specific protein 24, Insulin-like growth factor-binding protein 8, CTGF, CCN2, HCS24, IGFBP8
Accession No.	Swiss-Prot#: P29279
Uniprot	P29279
GeneID	1490;
Formulation	Preservative: 0.03% Proclin 300 Constituents: 50% Glycerol, 0.01M PBS, PH 7.4
Storage	Store at -20°C

Application Details

Immunohistochemistry: 1:20 - 1:200

Images



Immunohistochemical analysis of paraffin-embedded human colorectal carcinoma using #42506 at dilution of 1:50.

Background

Major connective tissue mitogen secreted by vascular endothelial cells. Promotes proliferation and differentiation of chondrocytes. Mediates heparin- and divalent cation-dependent cell adhesion in many cell types including fibroblasts, myofibroblasts, endothelial and epithelial cells. Enhances fibroblast growth factor-induced DNA synthesis.

References

[1] "Connective tissue growth factor: a cysteine-rich mitogen secreted by human vascular endothelial cells is related to the SRC-induced immediate early gene product CEF-10." Bradham D.M., Igarashi A., Potter R.L., Grotendorst G.R.J. Cell Biol. 114:1285-12

Note: This product is for in vitro research use only