

Creatine kinase M-type Polyclonal Antibody

Catalog No: #42513

Orders: order@signalwayantibody.com

Support: tech@signalwayantibody.com

Description

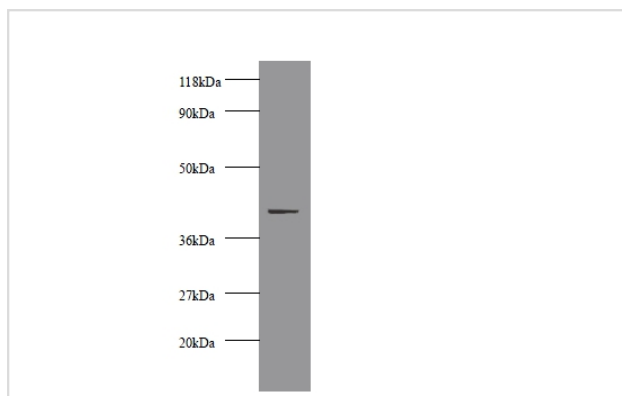
Product Name	Creatine kinase M-type Polyclonal Antibody
Host Species	Rabbit
Clonality	Polyclonal
Purification	Caprylic Acid Ammonium Sulfate Precipitation purified
Applications	WB IHC
Species Reactivity	Hu
Specificity	The antibody detects endogenous level of total Creatine kinase M-type polyclonal antibody.
Immunogen Type	protein
Immunogen Description	Recombinant human Creatine kinase M-type protein
Target Name	Creatine kinase M-type
Other Names	Creatine kinase M chain, M-CK, CKM, CKMM
Accession No.	Swiss-Prot#: P06732
Uniprot	P06732
GeneID	1158;
Calculated MW	42kd
Formulation	Preservative: 0.03% Proclin 300 Constituents: 50% Glycerol, 0.01M PBS, PH 7.4
Storage	Store at -20°C

Application Details

Western blotting: □ 1:500 - 1:1000

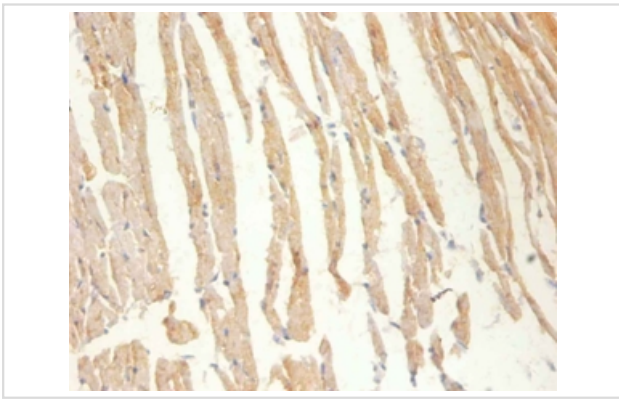
Immunohistochemistry: 1:20 - 1:200

Images



All lanes : Creatine kinase M-type antibody at 2ug/ml+293T
whole cell lysate
Secondary
Goat polyclonal to Rabbit IgG at 1/10000 dilution

Predicted band size : 42 kDa
Observed band size: 42 kDa



Immunohistochemical analysis of paraffin-embedded mouse heart tissue using #42513 at dilution of 1:100.

Background

Reversibly catalyzes the transfer of phosphate between ATP and various phosphogens (e.g. creatine phosphate). Creatine kinase isoenzymes play a central role in energy transduction in tissues with large, fluctuating energy demands, such as skeletal muscle, heart, brain and spermatozoa.

References

[1] "Isolation and sequence analysis of a full-length cDNA for human M creatine kinase."Perryman M.B., Kerner S.A., Bohlmeyer T.J., Roberts R.Biochem. Biophys. Res. Commun. 140:981-989(1986) [2] "Developmental regulation and tissue-specific expression of

Note: This product is for in vitro research use only