

Creatine kinase U-type,mitochondrial Polyclonal Antibody

Catalog No: #42514

Orders: order@signalwayantibody.comSupport: tech@signalwayantibody.com

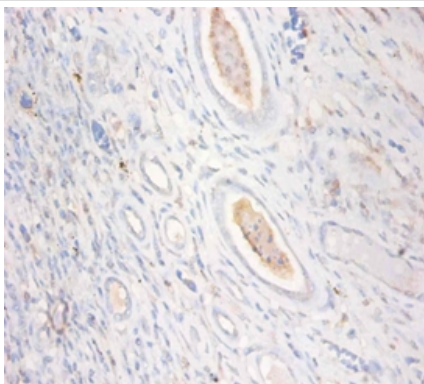
Description

Product Name	Creatine kinase U-type,mitochondrial Polyclonal Antibody
Host Species	Rabbit
Clonality	Polyclonal
Purification	Caprylic Acid Ammonium Sulfate Precipitation purified
Applications	IHC
Species Reactivity	Hu
Specificity	The antibody detects endogenous level of total Creatine kinase U-type,mitochondrial polyclonal antibody.
Immunogen Type	protein
Immunogen Description	Recombinant human Creatine kinase U-type, mitochondrial protein
Target Name	Creatine kinase U-type,mitochondrial
Other Names	CKMT, CKMT1B, CKMT1A, Acidic-type mitochondrial creatine kinase, Mia-CK, Ubiquitous mitochondrial creatine kinase, U-MtCK
Accession No.	Swiss-Prot#: P12532
Uniprot	P12532
GeneID	1159;548596;
Formulation	Preservative: 0.03% Proclin 300 Constituents: 50% Glycerol, 0.01M PBS, PH 7.4
Storage	Store at -20°C

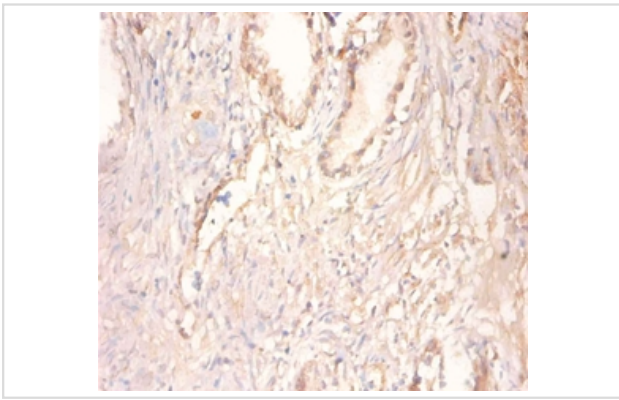
Application Details

Immunohistochemistry: 1:20 - 1:200

Images



Immunohistochemical analysis of paraffin-embedded human kidney using #42514 at dilution of 1:100.



Immunohistochemical analysis of paraffin-embedded human prostate using #42514 at dilution of 1:100.

Background

Reversibly catalyzes the transfer of phosphate between ATP and various phosphogens (e.g. creatine phosphate). Creatine kinase isoenzymes play a central role in energy transduction in tissues with large, fluctuating energy demands, such as skeletal muscle, heart, brain and spermatozoa.

References

[1] "Isolation and characterization of the gene and cDNA encoding human mitochondrial creatine kinase." Haas R.C., Korenfeld C., Zhang Z., Perryman B., Roman D., Strauss A.W.J. *Biol. Chem.* 264:2890-2897(1989) [2] "Cloning of human full-length CDSs in BD

Note: This product is for in vitro research use only