

## Growth/differentiation factor 15 Polyclonal Antibody

Catalog No: #42518

Orders: order@signalwayantibody.com

Support: tech@signalwayantibody.com

## Description

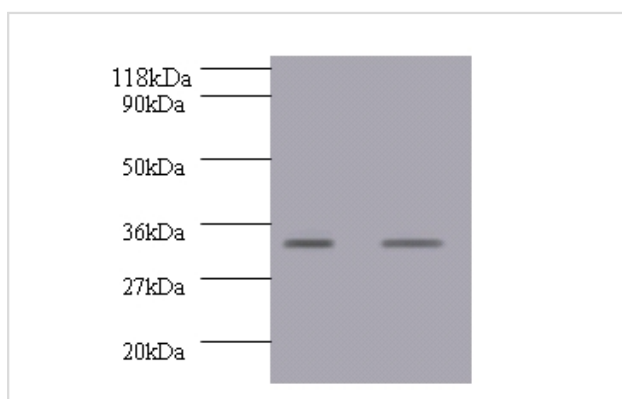
Product Name	Growth/differentiation factor 15 Polyclonal Antibody
Host Species	Rabbit
Clonality	Polyclonal
Purification	Caprylic Acid Ammonium Sulfate Precipitation purified
Applications	WB IHC
Species Reactivity	Hu
Specificity	The antibody detects endogenous level of total Growth/differentiation factor 15 polyclonal antibody.
Immunogen Type	protein
Immunogen Description	Recombinant human Growth/differentiation factor 15 protein
Target Name	Growth/differentiation factor 15
Other Names	Macrophage inhibitory cytokine 1, NSAID-activated gene 1 protein, NSAID-regulated gene 1 protein, Placental TGF-beta, Placental bone morphogenetic protein, Prostate differentiation factor, GDF15, MIC1, PDF, PLAB, PTGFB
Accession No.	Swiss-Prot#: Q99988
Uniprot	Q99988
GeneID	9518;
Calculated MW	34kd
Formulation	Preservative: 0.03% Proclin 300 Constituents: 50% Glycerol, 0.01M PBS, PH 7.4
Storage	Store at -20°C

## Application Details

Western blotting: □1:500 - 1:1000

Immunohistochemistry: 1:20 - 1:200

## Images



All lanes : Growth/differentiation factor 15 antibody at 2ug/ml

Lane 1 : EC109 whole cell lysate

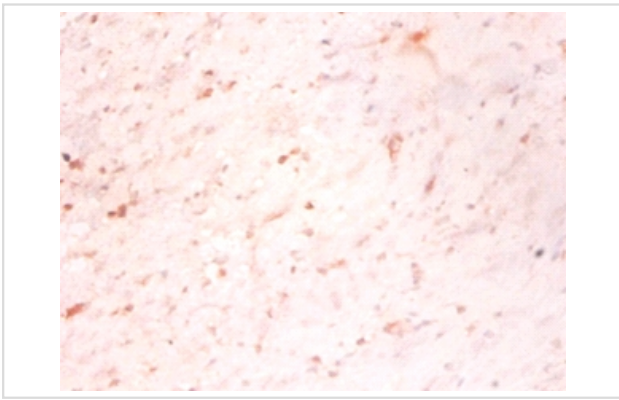
Lane 2 : 293T whole cell lysate

Secondary

Goat polyclonal to rabbit IgG at 1/10000 dilution

Predicted band size : 34kDa

Observed band size: 34kDa



Immunohistochemical analysis of paraffin-embedded human colorectal carcinoma using #42518 at dilution of 1:50.

## Background

Growth differentiation factor-15 (GDF-15) is disclosed along with its polynucleotide sequence and amino acid sequence. Also disclosed are diagnostic and therapeutic methods of using the GDF-15 polypeptide and polynucleotide sequences

## References

- [1]PLAB, a novel placental bone morphogenetic protein.Hromas R., Hufford M., Sutton J., Xu D., Li Y., Lu L.Biochim. Biophys. Acta 1354:40-44(1997)
- [2]Human cDNA encoding a novel TGF-beta superfamily protein highly expressed in placenta.Yokoyama-Kobayash

Note: This product is for in vitro research use only