

Cell surface glycoprotein MUC18 Polyclonal Antibody

Catalog No: #42523

Orders: order@signalwayantibody.comSupport: tech@signalwayantibody.com

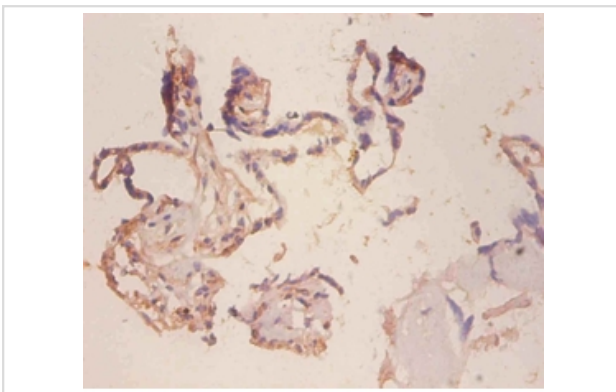
Description

Product Name	Cell surface glycoprotein MUC18 Polyclonal Antibody
Host Species	Rabbit
Clonality	Polyclonal
Purification	Caprylic Acid Ammonium Sulfate Precipitation purified
Applications	IHC
Species Reactivity	Hu
Specificity	The antibody detects endogenous level of total Cell surface glycoprotein MUC18 polyclonal antibody.
Immunogen Type	protein
Immunogen Description	Recombinant Human Cell surface glycoprotein MUC18 Protein
Target Name	Cell surface glycoprotein MUC18
Other Names	Cell surface glycoprotein P1H12, Melanoma cell adhesion molecule, Melanoma-associated antigen A32, Melanoma-associated antigen MUC18, S-endo 1 endothelial-associated antigen, CD_antigen=CD146, MCAM, MUC18
Accession No.	Swiss-Prot#: P43121
Uniprot	P43121
GeneID	4162;
Formulation	Preservative: 0.03% Proclin 300 Constituents: 50% Glycerol, 0.01M PBS, PH 7.4
Storage	Store at -20°C

Application Details

Immunohistochemistry: 1:20 - 1:200

Images



Immunohistochemical analysis of paraffin-embedded human placenta using #42523 at dilution of 1:100.

Background

Plays a role in cell adhesion, and in cohesion of the endothelial monolayer at intercellular junctions in vascular tissue. Its expression may allow melanoma cells to interact with cellular elements of the vascular system, thereby enhancing hematogeneous tumor spread. Could be an adhesion

molecule active in neural crest cells during embryonic development. Acts as surface receptor that triggers tyrosine phosphorylation of FYN and PTK2/FAK1, and a transient increase in the intracellular calcium concentration.

References

[1] MUC18, a marker of tumor progression in human melanoma, shows sequence similarity to the neural cell adhesion molecules of the immunoglobulin superfamily. Lehmann J.M., Riethmueller G., Johnson J.P. Proc. Natl. Acad. Sci. U.S.A. 86:9891-9895(1989) [2]

Note: This product is for in vitro research use only