

## Midkine Polyclonal Antibody

Catalog No: #42524

Orders: [order@signalwayantibody.com](mailto:order@signalwayantibody.com)Support: [tech@signalwayantibody.com](mailto:tech@signalwayantibody.com)

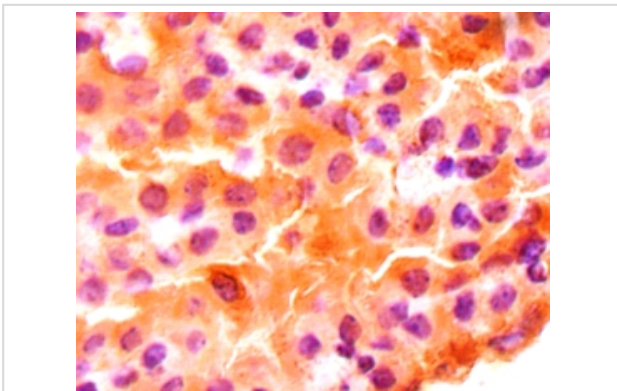
## Description

Product Name	Midkine Polyclonal Antibody
Host Species	Rabbit
Clonality	Polyclonal
Purification	Caprylic Acid Ammonium Sulfate Precipitation purified
Applications	IHC
Species Reactivity	Hu
Specificity	The antibody detects endogenous level of total Midkine polyclonal antibody.
Immunogen Type	protein
Immunogen Description	Recombinant human Midkine protein
Target Name	Midkine
Other Names	Amphiregulin-associated protein, Midgestation and kidney protein, Neurite outgrowth-promoting factor 2, Neurite outgrowth-promoting protein, MDK, MK1, NEGF2
Accession No.	Swiss-Prot#: P21741
Uniprot	P21741
GeneID	4192;
Formulation	Preservative: 0.03% Proclin 300 Constituents: 50% Glycerol, 0.01M PBS, PH 7.4
Storage	Store at -20°C

## Application Details

Immunohistochemistry: 1:20 - 1:200

## Images



Immunohistochemical analysis of paraffin-embedded mouse brain using #42524 at dilution of 1:50.

## Background

Developmentally regulated, secreted growth factor homologous to pleiotrophin (PTN), which has heparin binding activity. Binds anaplastic lymphoma kinase (ALK) which induces ALK activation and subsequent phosphorylation of the insulin receptor substrate (IRS1), followed by the activation of mitogen-activated protein kinase (MAPK) and PI3-kinase, and the induction of cell proliferation. Involved in neointima formation after arterial injury, possibly by mediating leukocyte recruitment. Also involved in early fetal adrenal gland development

## References

---

[1] "A new family of heparin-binding factors: strong conservation of midkine (MK) sequences between the human and the mouse." Tsutsui J., Uehara K., Kadomatsu K., Matsubara S., Muramatsu T. *Biochem. Biophys. Res. Commun.* 176:792-797(1991) [2] "Cloning, ch

---

Note: This product is for in vitro research use only