

## Bone morphogenetic protein 6 Polyclonal Antibody

Catalog No: #42530

Orders: [order@signalwayantibody.com](mailto:order@signalwayantibody.com)Support: [tech@signalwayantibody.com](mailto:tech@signalwayantibody.com)

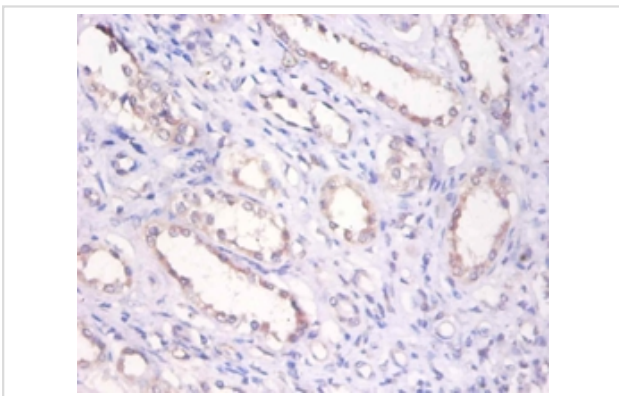
## Description

Product Name	Bone morphogenetic protein 6 Polyclonal Antibody
Host Species	Rabbit
Clonality	Polyclonal
Purification	Caprylic Acid Ammonium Sulfate Precipitation purified
Applications	IHC
Species Reactivity	Hu
Specificity	The antibody detects endogenous level of total Bone morphogenetic protein 6 polyclonal antibody.
Immunogen Type	protein
Immunogen Description	Recombinant human Bone morphogenetic protein 6 protein
Target Name	Bone morphogenetic protein 6
Other Names	BMP6, VGR
Accession No.	Swiss-Prot#: P22004
Uniprot	P22004
GeneID	654;
Formulation	Preservative: 0.03% Proclin 300 Constituents: 50% Glycerol, 0.01M PBS, PH 7.4
Storage	Store at -20°C

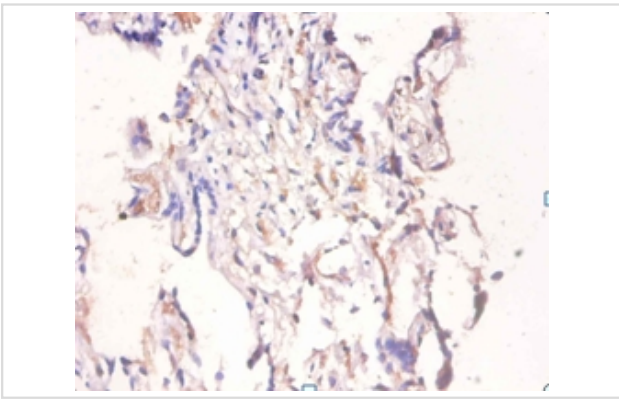
## Application Details

Immunohistochemistry: 1:20 - 1:200

## Images



Immunohistochemical analysis of paraffin-embedded human prostate using #42530 at dilution of 1:100.



Immunohistochemical analysis of paraffin-embedded human placenta using #42530 at dilution of 1:100.

## Background

Induces cartilage and bone formation.

## References

[1]"Identification of transforming growth factor beta family members present in bone-inductive protein purified from bovine bone."Celeste A.J., Iannazzi J.A., Taylor R.C., Hewick R.M., Rosen V., Wang E.A., Wozney J.M.Proc. Natl. Acad. Sci. U.S.A. 87:9843

Note: This product is for in vitro research use only