

Cathepsin S Polyclonal Antibody

Catalog No: #42531

Orders: order@signalwayantibody.comSupport: tech@signalwayantibody.com

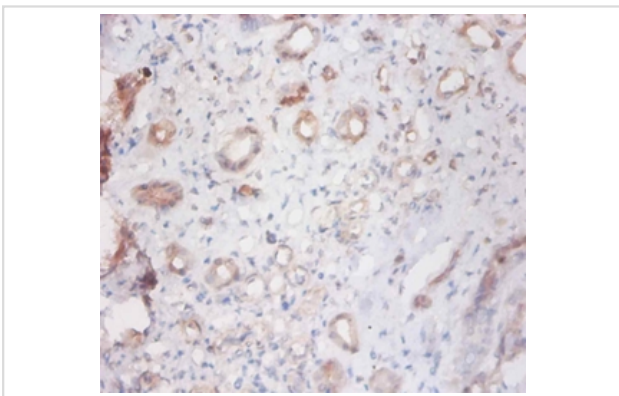
Description

Product Name	Cathepsin S Polyclonal Antibody
Host Species	Rabbit
Clonality	Polyclonal
Purification	Caprylic Acid Ammonium Sulfate Precipitation purified
Applications	IHC
Species Reactivity	Hu
Specificity	The antibody detects endogenous level of total Cathepsin S polyclonal antibody.
Immunogen Type	protein
Immunogen Description	Recombinant human Cathepsin S protein
Target Name	Cathepsin S
Other Names	CTSS
Accession No.	Swiss-Prot#: P25774
Uniprot	P25774
GeneID	1520;
Formulation	Preservative: 0.03% Proclin 300 Constituents: 50% Glycerol, 0.01M PBS, PH 7.4
Storage	Store at -20°C

Application Details

Immunohistochemistry: 1:20 - 1:200

Images



Immunohistochemical analysis of paraffin-embedded human kidney using #42531 at dilution of 1:100.

Background

Thiol protease. Key protease responsible for the removal of the invariant chain from MHC class II molecules. The bond-specificity of this proteinase is in part similar to the specificities of cathepsin L and cathepsin N.

References

[1] Molecular cloning and expression of human alveolar macrophage cathepsin S, an elastinolytic cysteine protease. Shi G.-P., Munger J.S., Meara J.P., Rich D.H., Chapman H.A.J. Biol. Chem. 267:7258-7262(1992) [2] Phylogenetic conservation of cysteine pro

Note: This product is for in vitro research use only