

Mucin-1 Polyclonal Antibody

Catalog No: #42535

Orders: order@signalwayantibody.comSupport: tech@signalwayantibody.com

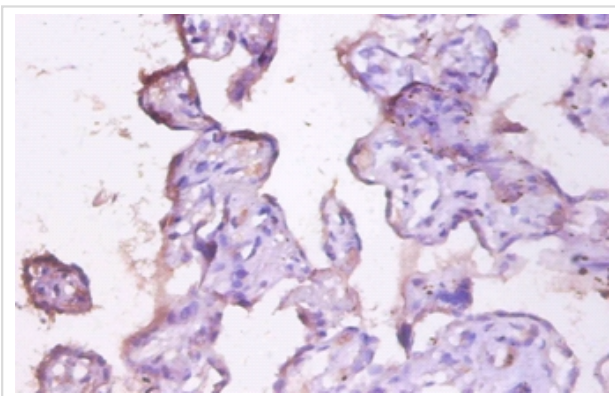
Description

Product Name	Mucin-1 Polyclonal Antibody
Host Species	Rabbit
Clonality	Polyclonal
Purification	Caprylic Acid Ammonium Sulfate Precipitation purified
Applications	IHC
Species Reactivity	Hu
Specificity	The antibody detects endogenous level of total Mucin-1 polyclonal antibody.
Target Name	Mucin-1
Other Names	PUM, MUC1, Breast carcinoma-associated antigen DF3 Carcinoma-associated mucin, Episialin, H23AG, Krebs von den Lungen-6, KL-6, PEMT, Peanut-reactive urinary mucin, PUM, Polymorphic epithelial mucin, PEM, Tumor-associated epithelial membrane antigen, EMA, Tumor-associa
Accession No.	Swiss-Prot#: P15941
Uniprot	P15941
GeneID	4582;
Formulation	Preservative: 0.03% Proclin 300 Constituents: 50% Glycerol, 0.01M PBS, PH 7.4
Storage	Store at -20°C

Application Details

Immunohistochemistry: 1:20 - 1:200

Images



Immunohistochemical analysis of paraffin-embedded human placenta using #42535 at dilution of 1:100.

Background

The alpha subunit has cell adhesive properties. Can act both as an adhesion and an anti-adhesion protein. May provide a protective layer on epithelial cells against bacterial and enzyme attack. Ref.26 Ref.37 Ref.40 Ref.45 Ref.46 Ref.49 Ref.52 Ref.53 Ref.56. The beta subunit contains a C-terminal domain which is involved in cell signaling, through phosphorylations and protein-protein interactions. Modulates signaling in ERK, SRC and NF-kappa-B pathways. In activated T-cells, influences directly or indirectly the Ras/MAPK pathway. Promotes tumor progression. Regulates TP53-mediated transcription and determines cell fate in the genotoxic stress response. Binds, together with KLF4, the PE21 promoter element of

TP53 and represses TP53 activity.

References

[1] "Cloning and sequencing of a human pancreatic tumor mucin cDNA."Lan M.S., Batra S.K., Qi W.-N., Metzgar R.S., Hollingsworth M.A.J. Biol. Chem. 265:15294-15299(1990) [2] "Episialin, a carcinoma-associated mucin, is generated by a polymorphic gene en

Note: This product is for in vitro research use only