

Chorionic somatomammotropin hormone Polyclonal Antibody

Catalog No: #42537

Orders: order@signalwayantibody.comSupport: tech@signalwayantibody.com

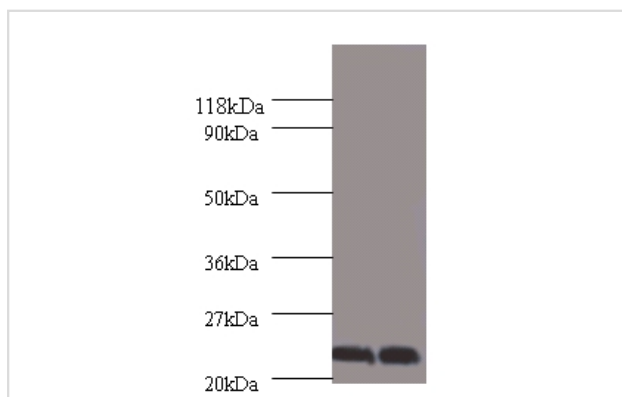
Description

Product Name	Chorionic somatomammotropin hormone Polyclonal Antibody
Host Species	Rabbit
Clonality	Polyclonal
Purification	Caprylic Acid Ammonium Sulfate Precipitation purified
Applications	WB
Species Reactivity	Hu
Specificity	The antibody detects endogenous level of total Chorionic somatomammotropin hormone polyclonal antibody.
Immunogen Type	protein
Immunogen Description	Recombinant human Chorionic somatomammotropin hormone protein
Target Name	Chorionic somatomammotropin hormone
Other Names	Lactogen, Placental lactogen, CSH1, CSH2
Accession No.	Swiss-Prot#: P0DML2
Uniprot	P0DML2
GenID	1442;
Calculated MW	25kd
Formulation	Preservative: 0.03% Proclin 300 Constituents: 50% Glycerol, 0.01M PBS, PH 7.4
Storage	Store at -20°C

Application Details

Western blotting: □1:500 - 1:1000

Images



All lane: Chorionic somatomammotropin hormone antibody at 2ug/ml

Lane 1 : A549 whole cell lysate

Lane 2 : u251 whole cell lysate

Secondary

Goat polyclonal to Rabbit IgG at 1/15000 dilution

Predicted band size :25 kDa

Observed band size: 25kDa

Background

Produced only during pregnancy and is involved in stimulating lactation, fetal growth and metabolism. Does not interact with GHR but only activates PRLR through zinc-induced dimerization.

References

[1] "Analysis of a major human chorionic somatomammotropin gene. Evidence for two functional promoter elements." Selby M.J., Barta A., Baxter J.D., Bell G.I., Eberhardt N.L.J. Biol. Chem. 259:13131-13138(1984) [2] "The human growth hormone gene locus: st

Note: This product is for in vitro research use only