

Collagen alpha-1(IV) chain Polyclonal Antibody

Catalog No: #42539

Orders: order@signalwayantibody.comSupport: tech@signalwayantibody.com

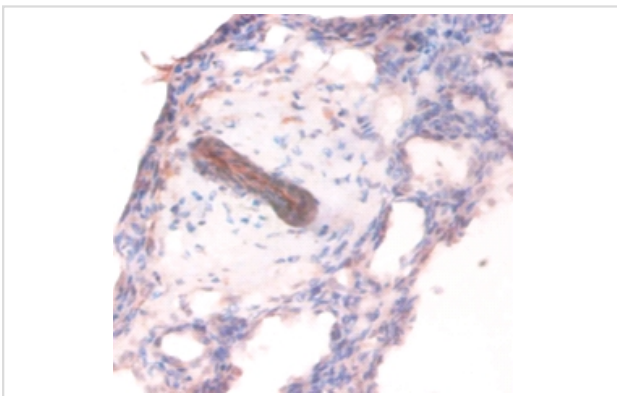
Description

Product Name	Collagen alpha-1(IV) chain Polyclonal Antibody
Host Species	Rabbit
Clonality	Polyclonal
Purification	Caprylic Acid Ammonium Sulfate Precipitation purified
Applications	IHC
Species Reactivity	Hu
Specificity	The antibody detects endogenous level of total Collagen alpha-1(IV) chain polyclonal antibody.
Immunogen Type	protein
Immunogen Description	Recombinant human Collagen alpha-1(IV) chain
Target Name	Collagen alpha-1(IV) chain
Other Names	Procollagen-proline, 2-oxoglutarate-4-dioxygenase subunit alpha-1;P4HA;P4HA1
Accession No.	Swiss-Prot#: P02462
Uniprot	P02462
GeneID	1282;
Formulation	Preservative: 0.03% Proclin 300 Constituents: 50% Glycerol, 0.01M PBS, PH 7.4
Storage	Store at -20°C

Application Details

Immunohistochemistry: 1:20 - 1:200

Images



Immunohistochemical analysis of paraffin-embedded human lung using #42539 at dilution of 1:100.

Background

Type IV collagen is the major structural component of glomerular basement membranes (GBM), forming a 'chicken-wire' meshwork together with laminins, proteoglycans and entactin/nidogen. Ref.12 Ref.17 Ref.18 Ref.19

References

[1] "Structural organization of the gene for the alpha 1 chain of human type IV collagen." Soininen R., Huotari M., Ganguly A., Prockop D.J., Tryggvason K.J. Biol. Chem. 264:13565-13571(1989) [PubMed: 2701944] [Abstract] Cited for: NUCLEOTIDE SEQUENCE [GENO

Note: This product is for in vitro research use only