

Glutamate carboxypeptidase 2 Polyclonal Antibody

Catalog No: #42546

Orders: order@signalwayantibody.com

Support: tech@signalwayantibody.com

Description

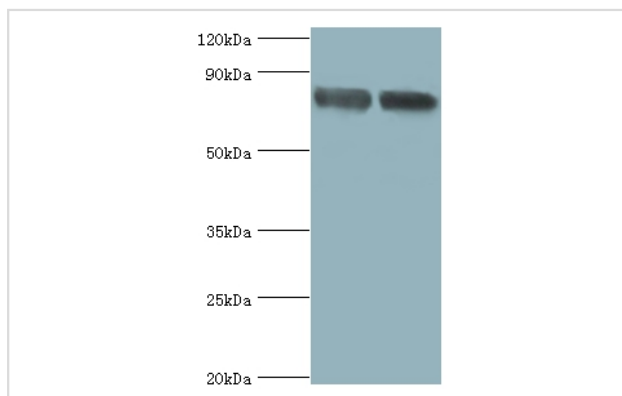
Product Name	Glutamate carboxypeptidase 2 Polyclonal Antibody
Host Species	Rabbit
Clonality	Polyclonal
Purification	Caprylic Acid Ammonium Sulfate Precipitation purified
Applications	WB IHC
Species Reactivity	Hu
Specificity	The antibody detects endogenous level of total Glutamate carboxypeptidase 2 polyclonal antibody.
Immunogen Type	protein
Immunogen Description	Recombinant human Glutamate carboxypeptidase 2 protein
Target Name	Glutamate carboxypeptidase 2
Other Names	GIG27, FOLH, NAALAD1, PSM, PSMA, FOLH1, Cell growth-inhibiting gene 27 protein, Folate hydrolase 1, Folylpoly-gamma-glutamate carboxypeptidase, FGCP, Glutamate carboxypeptidase II, GCPII, Membrane glutamate carboxypeptidase, mGCP, N-acetylated-alpha-linked acidic dipeptidase I, NAALADase I, Prostate
Accession No.	Swiss-Prot#: Q04609
Uniprot	Q04609
GeneID	2346;
Calculated MW	82kd
Formulation	Preservative: 0.03% Proclin 300 Constituents: 50% Glycerol, 0.01M PBS, PH 7.4
Storage	Store at -20°C

Application Details

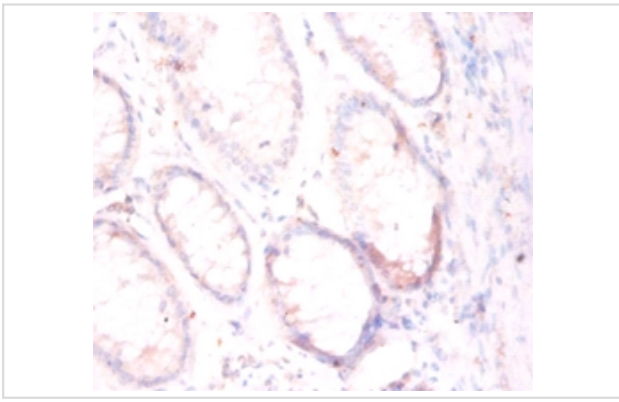
Western blotting: □1:500 - 1:1000

Immunohistochemistry: 1:20 - 1:200

Images



All lanes: Glutamate carboxypeptidase 2 antibody at 2ug/ml
 Lane 1: U251 whole cell lysate
 Lane 2: PC-3 whole cell lysate
 secondary
 Goat polyclonal to rabbit at 1/10000 dilution
 predicted band size :82kDa
 observed band size :82kDa



Immunohistochemical analysis of paraffin-embedded human colorectal carcinoma using #42546 at dilution of 1:100.

Background

Has both folate hydrolase and N-acetylated-alpha-linked-acidic dipeptidase (NAALADase) activity. Has a preference for tri-alpha-glutamate peptides. In the intestine, required for the uptake of folate. In the brain, modulates excitatory neurotransmission through the hydrolysis of the neuropeptide, N-acetylaspartylglutamate (NAAG), thereby releasing glutamate. Isoform PSM-4 and isoform PSM-5 would appear to be physiologically irrelevant. Involved in prostate tumor progression. Also exhibits a dipeptidyl-peptidase IV type activity. In vitro, cleaves Gly-Pro-AMC.

References

[1]"Molecular cloning of a complementary DNA encoding a prostate-specific membrane antigen."IsraeliR., Powell C.T., Fair W.R., Heston W.D.W.Cancer Res. 53:227-230(1993) [2]"Alternatively spliced variants of prostate-specific membrane antigen RNA: ratio

Note: This product is for in vitro research use only