

Methylated-DNA--protein-cysteine methyltransferase Polyclonal Antibody

Catalog No: #42551

Orders: order@signalwayantibody.comSupport: tech@signalwayantibody.com

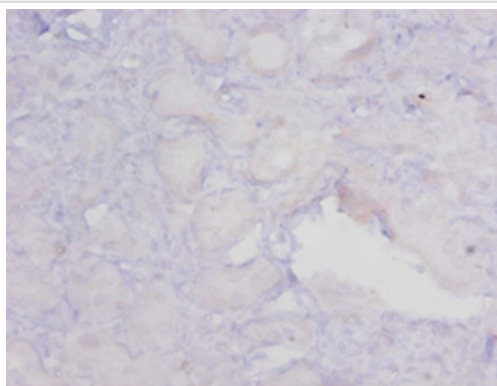
Description

Product Name	Methylated-DNA--protein-cysteine methyltransferase Polyclonal Antibody
Host Species	Rabbit
Clonality	Polyclonal
Purification	Caprylic Acid Ammonium Sulfate Precipitation purified
Applications	IHC
Species Reactivity	Hu
Specificity	The antibody detects endogenous level of total Methylated-DNA--protein-cysteine methyltransferase polyclonal antibody.
Immunogen Type	protein
Immunogen Description	Recombinant human Methylated-DNA--protein-cysteine methyltransferase
Target Name	Methylated-DNA--protein-cysteine methyltransferase
Other Names	MGMT
Accession No.	Swiss-Prot#: P16455
Uniprot	P16455
GeneID	4255;
Formulation	Preservative: 0.03% Proclin 300 Constituents: 50% Glycerol, 0.01M PBS, PH 7.4
Storage	Store at -20°C

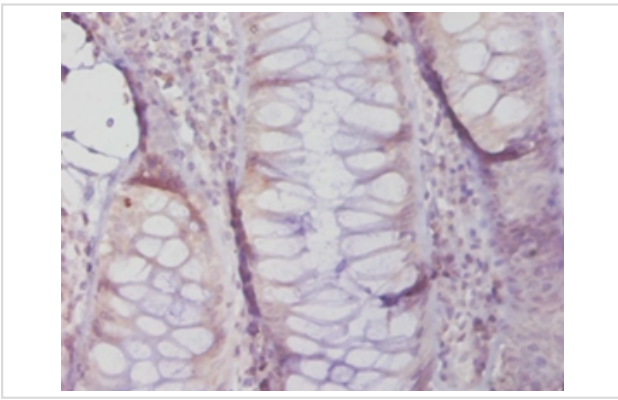
Application Details

Immunohistochemistry: 1:20 - 1:200

Images



Immunohistochemical analysis of paraffin-embedded human kidney using #42551 at dilution of 1:20.



Immunohistochemical analysis of paraffin-embedded human colon cancer using #42551 at dilution of 1:20.

Background

Involved in the cellular defense against the biological effects of O6-methylguanine (O6-MeG) in DNA. Repairs alkylated guanine in DNA by stoichiometrically transferring the alkyl group at the O-6 position to a cysteine residue in the enzyme. This is a suicide reaction: the enzyme is irreversibly inactivated.

References

[1] "Isolation and structural characterization of a cDNA clone encoding the human DNA repair protein for O6-alkylguanine."Tano K., Shiota S., Collier J., Foote R.S., Mitra S.Proc. Natl. Acad. Sci. U.S.A. 87:686-690(1990) [2] "cDNA clo

Note: This product is for in vitro research use only