

## Islet cell autoantigen 1 Polyclonal Antibody

Catalog No: #42556

Orders: order@signalwayantibody.com

Support: tech@signalwayantibody.com

## Description

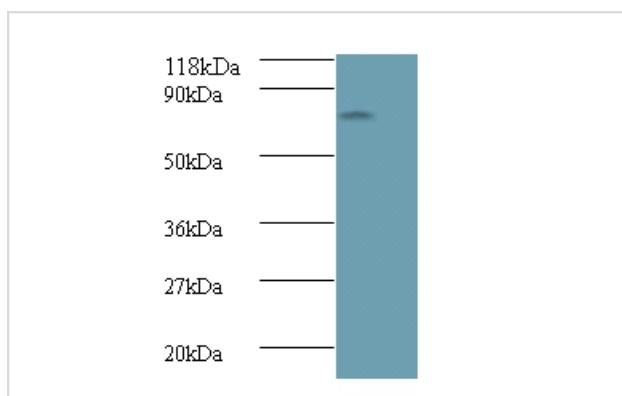
Product Name	Islet cell autoantigen 1 Polyclonal Antibody
Host Species	Rabbit
Clonality	Polyclonal
Purification	Caprylic Acid Ammonium Sulfate Precipitation purified
Applications	WB IHC
Species Reactivity	Hu
Specificity	The antibody detects endogenous level of total Islet cell autoantigen 1 polyclonal antibody.
Immunogen Type	protein
Immunogen Description	Recombinant human Islet cell autoantigen 1 protein
Target Name	Islet cell autoantigen 1
Other Names	69 kDa islet cell autoantigen Islet cell autoantigen p69 ICA1
Accession No.	Swiss-Prot#: Q05084
Uniprot	Q05084
GeneID	3382;
Calculated MW	55kd
Formulation	Preservative: 0.03% Proclin 300 Constituents: 50% Glycerol, 0.01M PBS, PH 7.4
Storage	Store at -20°C

## Application Details

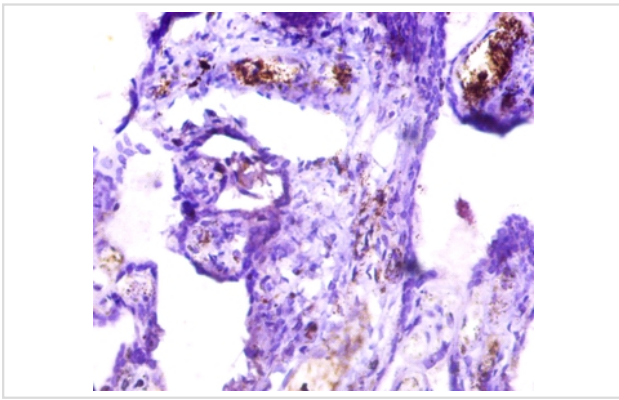
Western blotting: □1:500 - 1:1000

Immunohistochemistry: 1:20 - 1:200

## Images



All lanes : Islet cell autoantigen 1 antibody at 2ug/ml+A549 whole cell lysate  
 SecondaryGoat polyclonal to Rabbit IgG at 1/10000 dilution  
 Predicted band size :55 kDa  
 Observed band size:55 kDa



Immunohistochemical analysis of paraffin-embedded human placenta using #42556 at dilution of 1:50.

## Background

May play a role in neurotransmitter secretion

## References

[1] Islet cell autoantigen 69 kD (ICA69). Molecular cloning and characterization of a novel diabetes-associated autoantigen. Pietropaolo M., Castano L., Babu S., Buelow R., Kuo Y.-L.S., Martin S., Martin A., Powers A.C., Prochazka M., Naggert J., Leiter E.H

Note: This product is for in vitro research use only