

Islet amyloid polypeptide Polyclonal Antibody

Catalog No: #42558

Orders: order@signalwayantibody.comSupport: tech@signalwayantibody.com

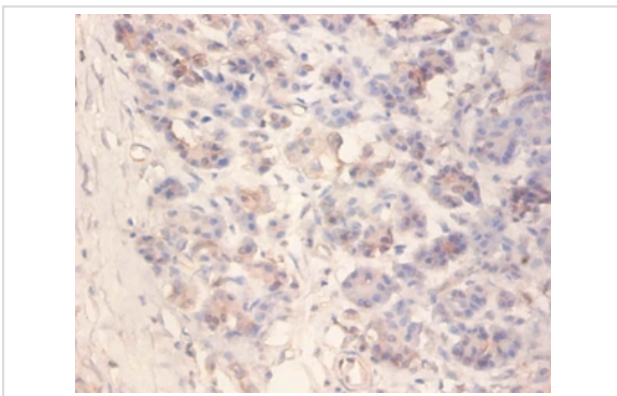
Description

Product Name	Islet amyloid polypeptide Polyclonal Antibody
Host Species	Rabbit
Clonality	Polyclonal
Purification	Caprylic Acid Ammonium Sulfate Precipitation purified
Applications	IHC
Species Reactivity	Hu
Specificity	The antibody detects endogenous level of total Islet amyloid polypeptide polyclonal antibody.
Immunogen Type	protein
Immunogen Description	Recombinant human Islet amyloid polypeptide protein
Target Name	Islet amyloid polypeptide
Other Names	Amylin, Diabetes-associated peptide, Insulinoma amyloid peptide, IAPP
Accession No.	Swiss-Prot#: P10997
Uniprot	P10997
GeneID	3375;
Formulation	Preservative: 0.03% Proclin 300 Constituents: 50% Glycerol, 0.01M PBS, PH 7.4
Storage	Store at -20°C

Application Details

Immunohistochemistry: 1:20 - 1:200

Images



Immunohistochemical analysis of paraffin-embedded human pancreas using #42558 at dilution of 1:100.

Background

Selectively inhibits insulin-stimulated glucose utilization and glycogen deposition in muscle, while not affecting adipocyte glucose metabolism.

References

[1] "The complete islet amyloid polypeptide precursor is encoded by two exons." Mosselman S., Hoepfener J.W.M., Lips C.J.M., Jansz H.S. FEBS Lett. 247:154-158(1989) [2] "Human islet amyloid polypeptide gene: complete nucleotide sequence, chromosomal local

Note: This product is for in vitro research use only