

## Macrophage metalloelastase Polyclonal Antibody

Catalog No: #42560

Orders: order@signalwayantibody.com

Support: tech@signalwayantibody.com

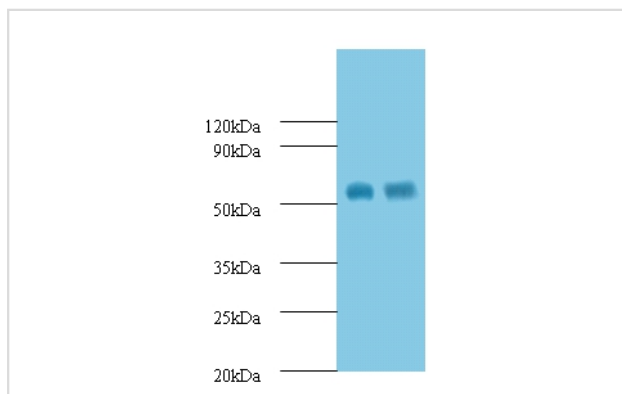
## Description

Product Name	Macrophage metalloelastase Polyclonal Antibody
Host Species	Rabbit
Clonality	Polyclonal
Purification	Caprylic Acid Ammonium Sulfate Precipitation purified
Applications	WB
Species Reactivity	Hu
Specificity	The antibody detects endogenous level of total Macrophage metalloelastase polyclonal antibody.
Immunogen Type	protein
Immunogen Description	Recombinant human Macrophage metalloelastase protein
Target Name	Macrophage metalloelastase
Other Names	Macrophage elastase Matrix metalloproteinase-12 MMP12 HME
Accession No.	Swiss-Prot#: P39900
Uniprot	P39900
GeneID	4321;
Calculated MW	54kd
Formulation	Preservative: 0.03% Proclin 300 Constituents: 50% Glycerol, 0.01M PBS, PH 7.4
Storage	Store at -20°C

## Application Details

Western blotting: □ 1:500 - 1:1000

## Images



All lanes : Macrophage metalloelastase Antibody at 2ug/ml

Lane 1:Hela whole cell lysate

Lane 2:NIH3T3 whole cell lysate

Secondary

Goat polyclonal to Rabbit IgG at 1/10000 dilution

Predicted band size:54kDa

Observed band size:54kDa

## Background

May be involved in tissue injury and remodeling. Has significant elastolytic activity. Can accept large and small amino acids at the P1' site, but has a preference for leucine. Aromatic or hydrophobic residues are preferred at the P1 site, with small hydrophobic residues (preferably alanine) occupying P3.

## References

---

[1]Cloning and characterization of a unique elastolytic metalloproteinase produced by human alveolar macrophages.Shapiro S.D., Kobayashi D.K., Ley T.J.J. Biol. Chem. 268:23824-23829(1993)[2]Mural R.J., Istrail S., Sutton G.G., Florea L., Halpern A.L., M

---

Note: This product is for in vitro research use only