

Beta-enolase Polyclonal Antibody

Catalog No: #42565

Orders: order@signalwayantibody.comSupport: tech@signalwayantibody.com

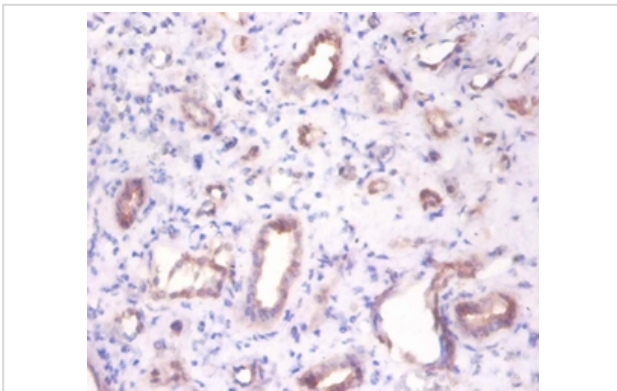
Description

Product Name	Beta-enolase Polyclonal Antibody
Host Species	Rabbit
Clonality	Polyclonal
Purification	Caprylic Acid Ammonium Sulfate Precipitation purified
Applications	IHC
Species Reactivity	Hu
Specificity	The antibody detects endogenous level of total Beta-enolase polyclonal antibody.
Immunogen Type	protein
Immunogen Description	Recombinant human Beta-enolase protein
Target Name	Beta-enolase
Other Names	2-phospho-D-glycerate hydro-lyase, Enolase 3, Muscle-specific enolase, MSE, Skeletal muscle enolase, ENO3
Accession No.	Swiss-Prot#: P13929
Uniprot	P13929
GeneID	2027;
Formulation	Preservative: 0.03% Proclin 300 Constituents: 50% Glycerol, 0.01M PBS, PH 7.4
Storage	Store at -20°C

Application Details

Immunohistochemistry: 1:20 - 1:200

Images



Immunohistochemical analysis of paraffin-embedded human kidney using #42565 at dilution of 1:100.

Background

Appears to have a function in striated muscle development and regeneration.

References

- [1] "Structure of human muscle (beta) enolase mRNA and protein deduced from a genomic clone." Peshavaria M., Hinks L.J., Day I.N.M. Nucleic Acids Res. 17:8862-8862(1989) [2] "Nucleotide sequence of a cDNA encoding the human muscle-specific enolase (MSE)." C
-

Note: This product is for in vitro research use only