

# 60 kDa SS-A/Ro ribonucleoprotein Polyclonal Antibody

Catalog No: #42572

Orders: [order@signalwayantibody.com](mailto:order@signalwayantibody.com)Support: [tech@signalwayantibody.com](mailto:tech@signalwayantibody.com)

## Description

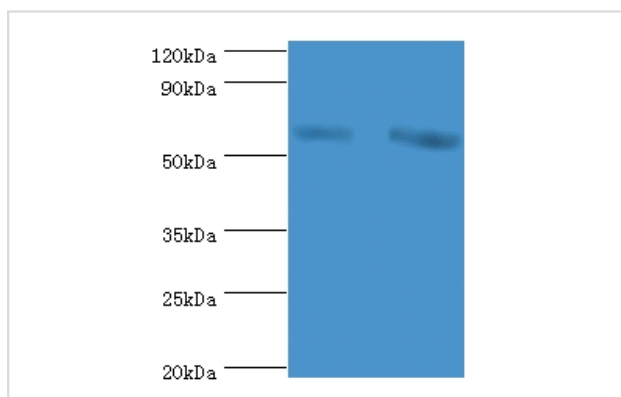
Product Name	60 kDa SS-A/Ro ribonucleoprotein Polyclonal Antibody
Host Species	Rabbit
Clonality	Polyclonal
Purification	Caprylic Acid Ammonium Sulfate Precipitation purified
Applications	WB
Species Reactivity	Hu
Specificity	The antibody detects endogenous level of total 60 kDa SS-A/Ro ribonucleoprotein polyclonal antibody.
Immunogen Type	protein
Immunogen Description	Recombinant human 60 kDa SS-A/Ro ribonucleoprotein protein
Target Name	60 kDa SS-A/Ro ribonucleoprotein
Other Names	Ro 60 kDa autoantigen, Sjogren syndrome antigen A2, Sjogren syndrome type A antigen, SS-A, TROVE domain family member 2, TROVE2 , RO60, SSA2
Accession No.	Swiss-Prot#: P10155
Uniprot	P10155
GeneID	6738;
Calculated MW	61kd
Formulation	Preservative: 0.03% Proclin 300 Constituents: 50% Glycerol, 0.01M PBS, PH 7.4
Storage	Store at -20°C

## Application Details

Western blotting: □1:500 - 1:1000

Immunohistochemistry: 1:20 - 1:200

## Images



All lanes:60 kDa SS-A/Ro ribonucleoprotein antibody at 2ug/ml

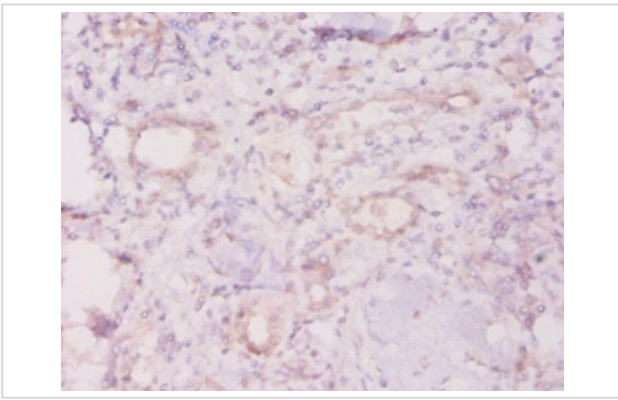
Lane 1:Hela whole cell lysate

Lane 2:293T whole cell lysate  
secondary

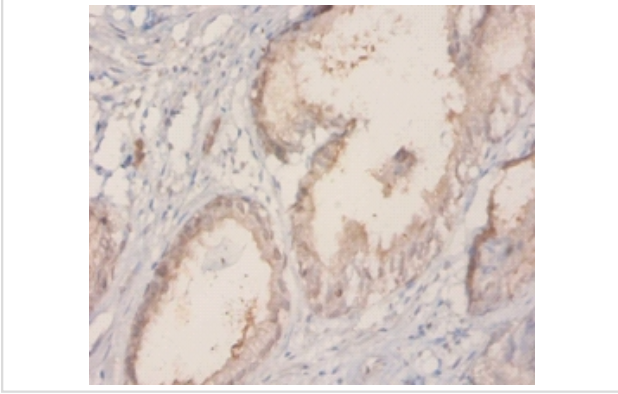
Goat polyclonal to rabbit at 1/10000 dilution

predicted band size :61kDa

observed band size :61kDa



Immunohistochemical analysis of paraffin-embedded human kidney using #42572 at dilution of 1:20.



Immunohistochemical analysis of paraffin-embedded human prostate using #42572 at dilution of 1:20.

## Background

RNA-binding protein that binds to several small cytoplasmic RNA molecules known as Y RNAs. May stabilize these RNAs from degradation. May play roles in cilia formation and/or maintenance

## References

[1] "Molecular analysis of the 60-kDa human Ro ribonucleoprotein." Deutscher S.L., Harley J.B., Keene J.D. Proc. Natl. Acad. Sci. U.S.A. 85:9479-9483(1988) [2] "Isolation and characterization of a cDNA clone encoding the 60-kD component

Note: This product is for in vitro research use only