

GTPase ERas Polyclonal Antibody

Catalog No: #42574

Orders: order@signalwayantibody.com

Support: tech@signalwayantibody.com

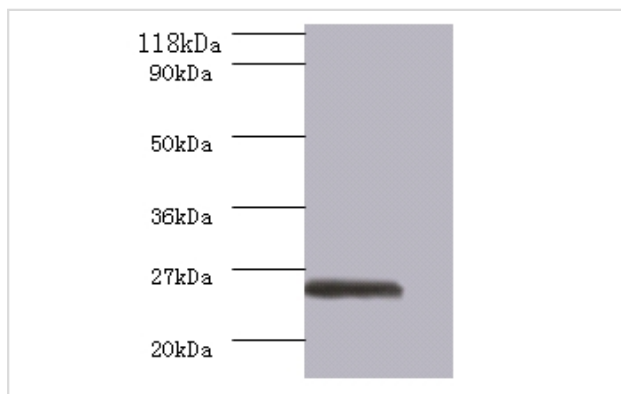
Description

| | |
|-----------------------|---------------------------------------------------------------------------------|
| Product Name | GTPase ERas Polyclonal Antibody |
| Host Species | Rabbit |
| Clonality | Polyclonal |
| Purification | Caprylic Acid Ammonium Sulfate Precipitation purified |
| Applications | WB |
| Species Reactivity | Hu |
| Specificity | The antibody detects endogenous level of total GTPase ERas polyclonal antibody. |
| Immunogen Type | protein |
| Immunogen Description | Recombinant human GTPase ERas protein |
| Target Name | GTPase ERas |
| Other Names | HRAS2, HRASP, ERAS, Embryonic stem cell-expressed Ras, E-Ras |
| Accession No. | Swiss-Prot#: Q7Z444 |
| Uniprot | Q7Z444 |
| GeneID | 3266; |
| Calculated MW | 26kd |
| Formulation | Preservative: 0.03% Proclin 300 Constituents: 50% Glycerol, 0.01M PBS, PH 7.4 |
| Storage | Store at -20°C |

Application Details

Western blotting: □1:500 - 1:1000

Images



All lanes : GTPase ERas antibody at 2ug/ml+293T whole cell lysate
 Secondary
 Goat polyclonal to Rabbit IgG at 1/10000 dilution
 Predicted band size :26kDa
 Observed band size:26 kDa

Background

Ras proteins bind GDP/GTP and possess intrinsic GTPase activity. Plays an important role in the tumor-like growth properties of embryonic stem cells.

References

[1] "Role of Eras in promoting tumor-like properties in mouse embryonic stem cells."Takahashi K., Mitsui K., Yamanaka S.Nature 423:541-545(2003)

[2] "The status, quality, and expansion of the NIH full-length cDNA project: the Mammalian Gen

Note: This product is for in vitro research use only