

Serum amyloid A-1 protein Polyclonal Antibody

Catalog No: #42575

Orders: order@signalwayantibody.com

Support: tech@signalwayantibody.com

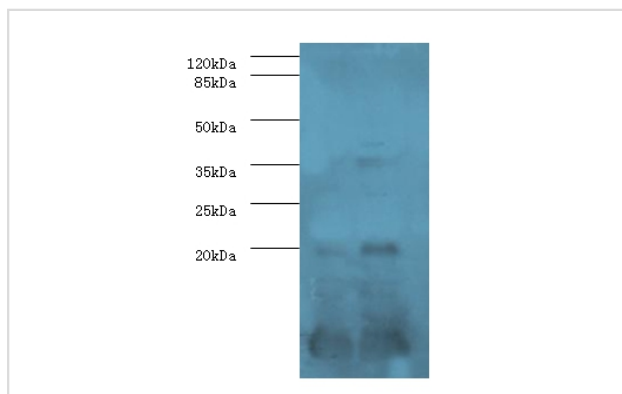
Description

Product Name	Serum amyloid A-1 protein Polyclonal Antibody
Host Species	Rabbit
Clonality	Polyclonal
Purification	Caprylic Acid Ammonium Sulfate Precipitation purified
Applications	WB
Species Reactivity	Hu
Specificity	The antibody detects endogenous level of total Serum amyloid A-1 protein polyclonal antibody.
Immunogen Type	protein
Immunogen Description	Recombinant human Serum amyloid A-1 protein
Target Name	Serum amyloid A-1 protein
Other Names	Amyloid fibril protein AA, SAA1
Accession No.	Swiss-Prot#: P02647
Uniprot	P02647
GeneID	335;
Calculated MW	13kd
Formulation	Preservative: 0.03% Proclin 300 Constituents: 50% Glycerol, 0.01M PBS, PH 7.4
Storage	Store at -20°C

Application Details

Western blotting: 1:500 - 1:1000

Images



All lanes: Serum amyloid A-1 antibody at 2ug/ml
 Lane 1: human high values of serum CRP50
 Lane 2: human high values of serum CRP100
 secondary
 Goat polyclonal to rabbit at 1/10000 dilution
 predicted band size :13kDa
 observed band size :13kDa

Background

Major acute phase reactant. Apolipoprotein of the HDL complex.

References

[1] "Human serum amyloid A (SAA): biosynthesis and postsynthetic processing of preSAA and structural variants defined by complementary DNA." Sipe J.D., Colten H.R., Goldberger G., Edge M.D., Tack B.F., Cohen A.S., Whitehead A.S. *Biochemistry* 24:29

Note: This product is for in vitro research use only