

## metC Polyclonal Antibody

Catalog No: #42584

Orders: [order@signalwayantibody.com](mailto:order@signalwayantibody.com)Support: [tech@signalwayantibody.com](mailto:tech@signalwayantibody.com)

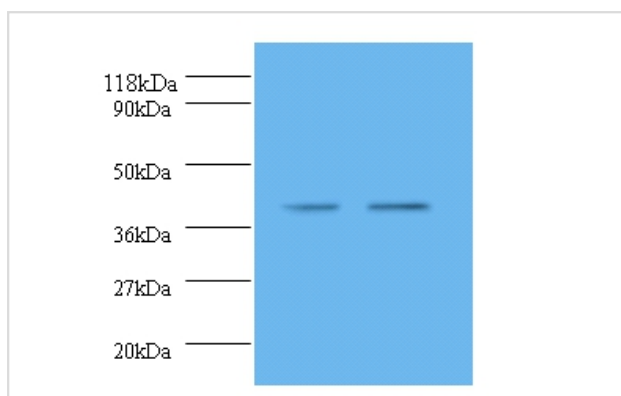
## Description

Product Name	metC Polyclonal Antibody
Host Species	Rabbit
Clonality	Polyclonal
Purification	Caprylic Acid Ammonium Sulfate Precipitation purified
Applications	WB
Species Reactivity	E.coli
Specificity	The antibody detects endogenous level of total metC polyclonal antibody.
Immunogen Type	protein
Immunogen Description	Recombinant Escherichia coli Cystathionine beta-lyase metC protein
Target Name	metC
Other Names	Beta-cystathionase, Cysteine lyase, metC
Accession No.	Swiss-Prot#: P06721
Uniprot	P06721
GeneID	946240;
Calculated MW	43kd
Concentration	1.0mg/mL
Formulation	Preservative: 0.03% Proclin 300 Constituents: 50% Glycerol, 0.01M PBS, PH 7.4
Storage	Store at -20°C

## Application Details

Western blotting: □ 1:500 - 1:1000

## Images



All lanes : Cystathionine beta-lyase metC antibody at 2ug/ml  
 Lane 1 : 293T whole cell lysat  
 Lane 2 : EC109 whole cell lysate  
 Secondary  
 Goat polyclonal to Rabbit IgG at 1/10000 dilution  
 Predicted band size :43KDa  
 Observed band size:43KDa

## Background

Catalyzes the transformation of cystathionine into homocysteine. Also exhibits cysteine desulfhydrase activity in vitro, producing sulfide from cysteine.

## References

---

[1]The complete genome sequence of the Gram-positive bacterium *Bacillus subtilis*.Kunst F., Ogasawara N., Moszer I., Albertini A.M., Ilni G., Azevedo V., Bertero M.G., Bessieres P., Bolotin A., Borchert S., Borriss R., Boursier L., Brans A., Braun M., Bri

---

Note: This product is for in vitro research use only