

Kininogen-1 Polyclonal Antibody

Catalog No: #42586

Orders: order@signalwayantibody.com

Support: tech@signalwayantibody.com

Description

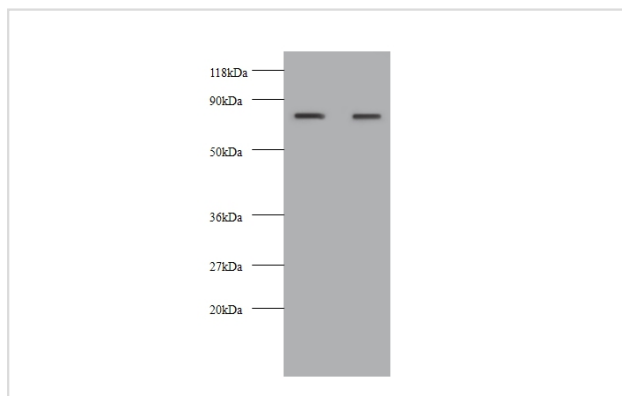
Product Name	Kininogen-1 Polyclonal Antibody
Host Species	Rabbit
Clonality	Polyclonal
Purification	Caprylic Acid Ammonium Sulfate Precipitation purified
Applications	WB IHC
Species Reactivity	Hu
Specificity	The antibody detects endogenous level of total Kininogen-1 polyclonal antibody.
Immunogen Type	protein
Immunogen Description	Recombinant human Kininogen-1 protein
Target Name	Kininogen-1
Other Names	Alpha-2-thiol proteinase inhibitor, Fitzgerald factor, High molecular weight kininogen, Williams-Fitzgerald-Flaujeac factor, KNG1, BDK, KNG
Accession No.	Swiss-Prot#: P01042
Uniprot	P01042
GeneID	3827;
Calculated MW	71kd
Formulation	Preservative: 0.03% Proclin 300 Constituents: 50% Glycerol, 0.01M PBS, PH 7.4
Storage	Store at -20°C

Application Details

Western blotting: □ 1:500 - 1:1000

Immunohistochemistry: 1:20 - 1:200

Images



All lanes : Kininogen-1 antibody at 2ug/ml

Lane 1 : EC109 whole cell lysate

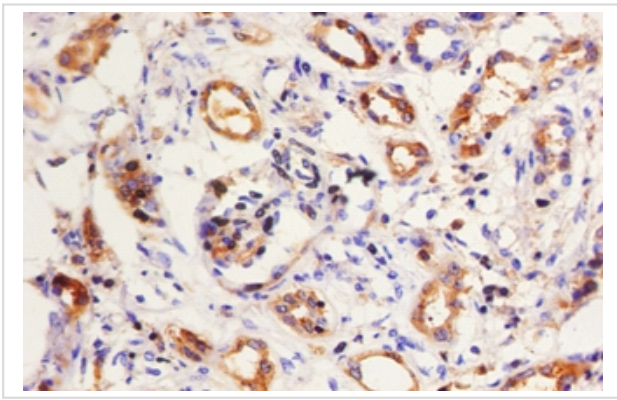
Lane 2 : 293T whole cell lysate

Secondary

Goat polyclonal to rabbit IgG at 1/10000 dilution

Predicted band size : 71kDa

Observed band size: 71kDa



Immunohistochemical analysis of paraffin-embedded humankidney using #42586 at dilution of 1:50.

Background

Kininogens are inhibitors of thiol proteases; (2) HMW-kininogen plays an important role in blood coagulation by helping to position optimally prekallikrein and factor XI next to factor XII; (3) HMW-kininogen inhibits the thrombin- and plasmin-induced aggregation of thrombocytes; (4) the active peptide bradykinin that is released from HMW-kininogen shows a variety of physiological effects: (4A) influence in smooth muscle contraction, (4B) induction of hypotension, (4C) natriuresis and diuresis, (4D) decrease in blood glucose level, (4E) it is a mediator of inflammation and causes (4E1) increase in vascular permeability, (4E2) stimulation of nociceptors (4E3) release of other mediators of inflammation (e.g. prostaglandins), (4F) it has a cardioprotective effect (directly via bradykinin action, indirectly via endothelium-derived relaxing factor action); (5) LMW-kininogen inhibits the aggregation of thrombocytes; (6) LMW-kininogen is in contrast to HMW-kininogen not involved in blood clotting.

References

[1] "Isolation of a human cDNA for alpha 2-thiol proteinase inhibitor and its identity with low molecular weight kininogen." Ohkubo I., Kurachi K., Takasawa T., Shiokawa H., Sasaki M. *Biochemistry* 23:5691-5697(1984) [2] "Cloning and sequ

Note: This product is for in vitro research use only