

Titin Polyclonal Antibody

Catalog No: #42592

Orders: order@signalwayantibody.comSupport: tech@signalwayantibody.com

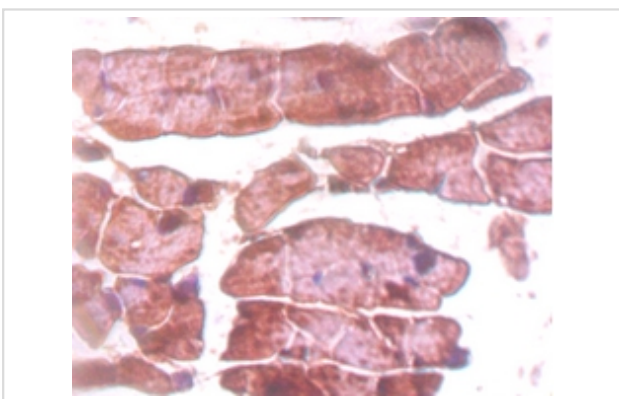
Description

Product Name	Titin Polyclonal Antibody
Host Species	Rabbit
Clonality	Polyclonal
Purification	Caprylic Acid Ammonium Sulfate Precipitation purified
Applications	IHC
Species Reactivity	Hu
Specificity	The antibody detects endogenous level of total Titin polyclonal antibody.
Immunogen Type	protein
Immunogen Description	Recombinant human Titin protein
Target Name	Titin
Other Names	Connectin, Rhabdomyosarcoma antigen MU-RMS-40.14.TTN
Accession No.	Swiss-Prot#: Q8WZ42
Uniprot	Q8WZ42
GeneID	7273;
Formulation	Preservative: 0.03% Proclin 300 Constituents: 50% Glycerol, 0.01M PBS, PH 7.4
Storage	Store at -20°C

Application Details

Immunohistochemistry: 1:20 - 1:200

Images



Immunohistochemical analysis of paraffin-embedded human heart using #42592 at dilution of 1:50.

Background

Key component in the assembly and functioning of vertebrate striated muscles. By providing connections at the level of individual microfilaments, it contributes to the fine balance of forces between the two halves of the sarcomere. The size and extensibility of the cross-links are the main determinants of sarcomere extensibility properties of muscle. In non-muscle cells, seems to play a role in chromosome condensation and chromosome segregation during mitosis. Might link the lamina network to chromatin or nuclear actin, or both during interphase.

References

[1] "Titins, giant proteins in charge of muscle ultrastructure and elasticity."Labeit S., Kolmerer B.Science 270:293-296(1995) [2] "Series of exon-skipping events in the elastic spring region of titin as the structural basis for myofibri

Note: This product is for in vitro research use only