

## Caspase-7 Polyclonal Antibody;

Catalog No: #42594

Orders: order@signalwayantibody.com

Support: tech@signalwayantibody.com

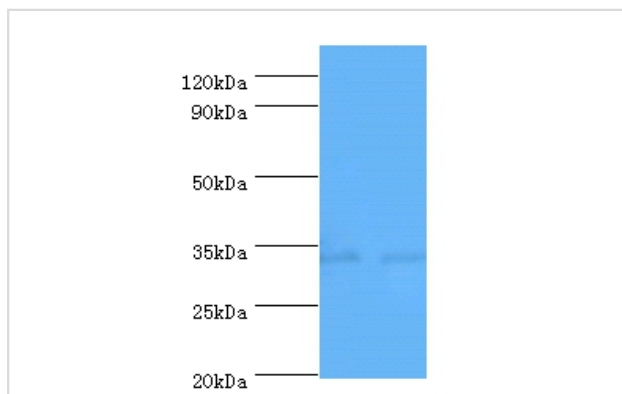
## Description

Product Name	Caspase-7 Polyclonal Antibody;
Host Species	Rabbit
Clonality	Polyclonal
Purification	Caprylic Acid Ammonium Sulfate Precipitation purified
Applications	WB
Species Reactivity	Hu
Specificity	The antibody detects endogenous level of total Caspase-7 polyclonal antibody;.
Immunogen Type	protein
Immunogen Description	Recombinant human Caspase-7 protein
Target Name	Caspase-7;
Other Names	Apoptotic protease Mch-3, CMH-1, ICE-like apoptotic protease 3
Accession No.	Swiss-Prot#: P55210
Uniprot	P55210
GeneID	840;
Calculated MW	34kd
Formulation	Preservative: 0.03% Proclin 300 Constituents: 50% Glycerol, 0.01M PBS, PH 7.4
Storage	Store at -20°C

## Application Details

Western blotting:  1:500 - 1:1000

## Images



All lanes: Caspase-7 antibody at 2ug/ml  
 Lane 1: A549 whole cell lysate  
 Lane 2: HGC-27 whole cell lysate  
 secondary  
 Goat polyclonal to rabbit at 1/10000 dilution  
 predicted band size :34kDa  
 observed band size :34kDa

## Background

Involved in the activation cascade of caspases responsible for apoptosis execution. Cleaves and activates sterol regulatory element binding proteins (SREBPs). Proteolytically cleaves poly(ADP-ribose) polymerase (PARP) at a '216-Asp-[Gly-217]' bond. Overexpression promotes programmed cell death.

## References

---

[1] "Mch3, a novel human apoptotic cysteine protease highly related to CPP32."Fernandes-Alnemri T., Takahashi A., Armstrong R.C., Krebs J., Fritz L.C., Tomaselli K.J., Wang L., Yu Z., Croce C.M., Salveson G., Earnshaw W.C., Litwack G., Alnemri E.S.Cancer

---

Note: This product is for in vitro research use only