

IdcC Polyclonal Antibody

Catalog No: #42603

Orders: order@signalwayantibody.com

Support: tech@signalwayantibody.com

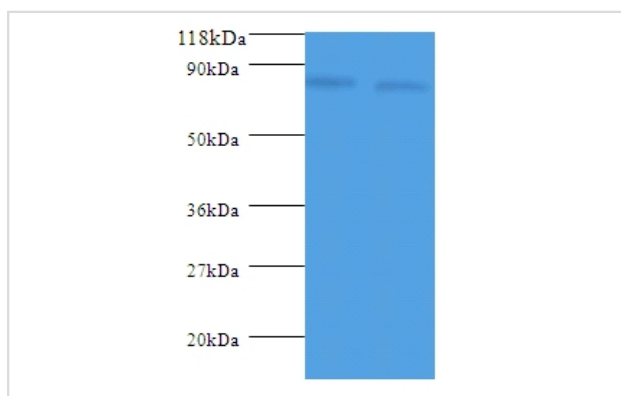
Description

Product Name	IdcC Polyclonal Antibody
Host Species	Rabbit
Clonality	Polyclonal
Purification	Caprylic Acid Ammonium Sulfate Precipitation purified
Applications	WB
Species Reactivity	E.coli
Specificity	The antibody detects endogenous level of total IdcC polyclonal antibody.
Immunogen Type	protein
Immunogen Description	Recombinant Escherichia coli Lysine decarboxylase, constitutive protein
Target Name	IdcC
Other Names	IdcC, Idc, IdcH, b0186, JW0181
Accession No.	Swiss-Prot#: P52095
Uniprot	P52095
GeneID	944887;
Calculated MW	80.5kd
Formulation	Preservative: 0.03% Proclin 300 Constituents: 50% Glycerol, 0.01M PBS, PH 7.4
Storage	Store at -20°C

Application Details

Western blotting: □1:500 - 1:1000

Images



All lanes : Lysine decarboxylase, constitutive antibody at 2ug/ml+DH5a whole cell lysate

Secondary
Goat polyclonal to Rabbit IgG at 1/10000 dilution
Predicted band size :80.5kDa
Observed band size:80.5kDa

Background

LDC is constitutively but weakly expressed under various conditions.

References

[1]"Characterization of a second lysine decarboxylase isolated from Escherichia coli."Kikuchi Y., Kojima H., Tanaka T., Takatsuka Y., Kamio Y.J. Bacteriol. 179:4486-4492(1997) [2] "The Escherichia coli ldcC gene encodes another lysine decarboxylase, pr

Note: This product is for in vitro research use only