

## ClpS Polyclonal Antibody

Catalog No: #42605

Orders: order@signalwayantibody.com

Support: tech@signalwayantibody.com

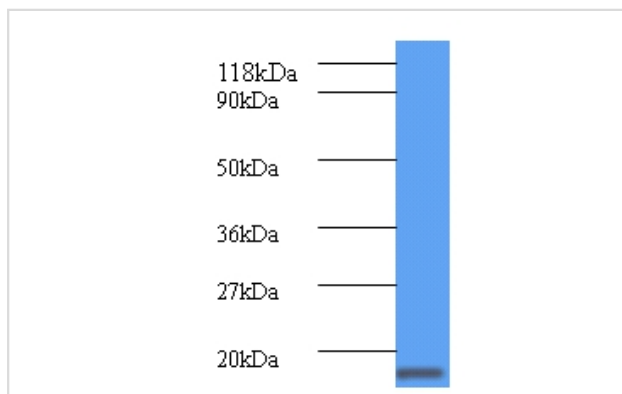
## Description

Product Name	ClpS Polyclonal Antibody
Host Species	Rabbit
Clonality	Polyclonal
Purification	Caprylic Acid Ammonium Sulfate Precipitation purified
Applications	WB IHC
Species Reactivity	Bacteria
Specificity	The antibody detects endogenous level of total ClpS polyclonal antibody.
Immunogen Type	protein
Immunogen Description	Recombinant Escherichia coli ATP-dependent Clp protease adapter protein ClpS protein
Target Name	ClpS
Other Names	clpS, yljA, b0881, JW0865.
Accession No.	Swiss-Prot#: P0A8Q6
Uniprot	P0A8Q6
GeneID	948443;
Calculated MW	12kd
Formulation	Preservative: 0.03% Proclin 300 Constituents: 50% Glycerol, 0.01M PBS, PH 7.4
Storage	Store at -20°C

## Application Details

Western blotting: □ 1:500 - 1:1000

## Images



All lanes: ATP-dependent Clp protease adapter protein ClpS antibody at 2ug/ml+DH5α whole cell lysate  
secondary  
Goat polyclonal to rabbit at 1/10000 dilution  
predicted band size :12kDa  
observed band size :12kDa

## Background

Involved in the modulation of the specificity of the ClpAP-mediated ATP-dependent protein degradation.

## References

---

[1] "A 718-kb DNA sequence of the Escherichia coli K-12 genome corresponding to the 12.7-28.0 min region on the linkage map." Oshima T., Aiba H., Baba T., Fujita K., Hayashi K., Honjo A., Ikemoto K., Inada T., Itoh T., Kajihara M., Kanai K., Kash

---

Note: This product is for in vitro research use only