

Complement C4-B Polyclonal Antibody

Catalog No: #42628

Orders: order@signalwayantibody.com

Support: tech@signalwayantibody.com

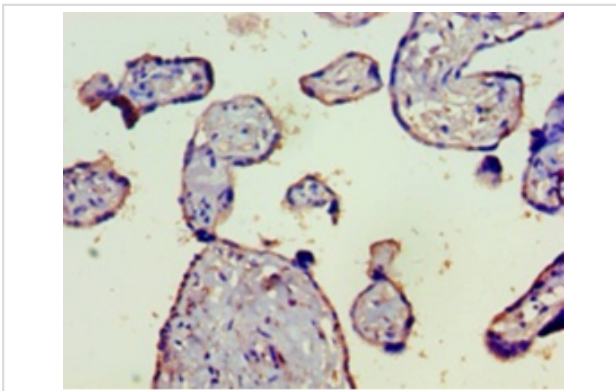
Description

Product Name	Complement C4-B Polyclonal Antibody
Host Species	Rabbit
Clonality	Polyclonal
Purification	Caprylic Acid Ammonium Sulfate Precipitation purified
Applications	IHC
Species Reactivity	Hu
Specificity	The antibody detects endogenous level of total Complement C4-B polyclonal antibody.
Immunogen Type	protein
Immunogen Description	Recombinant human Complement C4-B proteinB£B"1454-1744aaB£B©
Target Name	Complement C4-B
Other Names	Basic complement C4, C3 and PZP-like alpha-2-macroglobulin domain-containing protein 3, CO4, CPAMD3, C4B, C4B_2
Accession No.	Swiss-Prot#: P0C0L5
Uniprot	P0C0L5
GeneID	100293534;721;
Formulation	Preservative: 0.03% Proclin 300 Constituents: 50% Glycerol, 0.01M PBS, PH 7.4
Storage	Store at -20°C

Application Details

Immunohistochemistry: 1:20 - 1:200

Images



Immunohistochemical analysis of paraffin-embedded human placenta tissue using #42628 at dilution of 1:100.

Background

Non-enzymatic component of the C3 and C5 convertases and thus essential for the propagation of the classical complement pathway. Covalently binds to immunoglobulins and immune complexes and enhances the solubilization of immune aggregates and the clearance of IC through CR1 on erythrocytes. C4A isotype is responsible for effective binding to form amide bonds with immune aggregates or protein antigens, while C4B isotype catalyzes the transacylation of the thioester carbonyl group to form ester bonds with carbohydrate antigens. Ref.16 Ref.17 Derived from proteolytic

degradation of complement C4, C4a anaphylatoxin is a mediator of local inflammatory process. It induces the contraction of smooth muscle, increases vascular permeability and causes histamine release from mast cells and basophilic leukocytes.

References

[1]"Identification of N-linked glycoproteins in human saliva by glycoprotein capture and mass spectrometry." Ramachandran P., Boontheung P., Xie Y., Sondej M., Wong D.T., Loo J.A. J. *Proteome Res.* 5:1493-1503(2006). [2]"Screening for N-glycosylated proteins by liquid chromatography mass spectrometry." Bunkenborg J., Pilch B.J., Podtelejnikov A.V., Wisniewski J.R. *Proteomics* 4:454-465(2004). [3]"Genetic, structural and functional diversities of human complement components C4A and C4B and their mouse homologues, Slp and C4." Blanchong C.A., Chung E.K., Rupert K.L., Yang Y., Yang Z., Zhou B., Moulds J.M., Yu C.Y. *Int. Immunopharmacol.* 1:365-392(2001).

Note: This product is for in vitro research use only