

ligA Polyclonal Antibody

Catalog No: #42630

Orders: order@signalwayantibody.com

Support: tech@signalwayantibody.com

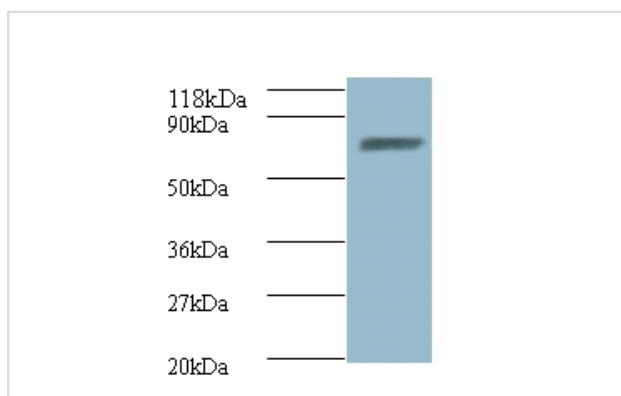
Description

Product Name	ligA Polyclonal Antibody
Host Species	Rabbit
Clonality	Polyclonal
Purification	Caprylic Acid Ammonium Sulfate Precipitation purified
Applications	WB IHC
Species Reactivity	E.coli
Specificity	The antibody detects endogenous level of total ligA polyclonal antibody.
Immunogen Type	protein
Immunogen Description	Recombinant Escherichia coli DNA ligase protein
Target Name	ligA
Other Names	Polydeoxyribonucleotide synthase [NAD(+)], ligA, dnaL, lig, lop, pdeC, b2411, JW2403
Accession No.	Swiss-Prot#: P15042
Uniprot	P15042
GeneID	946885;
Calculated MW	74kd
Formulation	Preservative: 0.03% Proclin 300 Constituents: 50% Glycerol, 0.01M PBS, PH 7.4
Storage	Store at -20°C

Application Details

Western blotting: □ 1:500 - 1:1000

Images



All lanes : DNA ligase antibody at 2ug/ml+DH5a whole cell lysate
 Secondary
 Goat polyclonal to Rabbit IgG at 1/10000 dilution
 Predicted band size :74 kDa
 Observed band size: 74 kDa

Background

DNA ligase that catalyzes the formation of phosphodiester linkages between 5'-phosphoryl and 3'-hydroxyl groups in double-stranded DNA using NAD as a coenzyme and as the energy source for the reaction. It is essential for DNA replication and repair of damaged DNA.

References

[1] Nucleotide sequence of the lig gene and primary structure of DNA ligase of Escherichia coli. Ishino Y., Shinagawa H., Makino K., Tsunasawa S., Sakiyama F., Nakata A. Mol. Gen. Genet. 204:1-7(1986) [2] Ally A., Ally D., Zhang X., Robichaud M., Backma

Note: This product is for in vitro research use only