

cpg2 Polyclonal Antibody

Catalog No: #42637

Orders: order@signalwayantibody.com

Support: tech@signalwayantibody.com

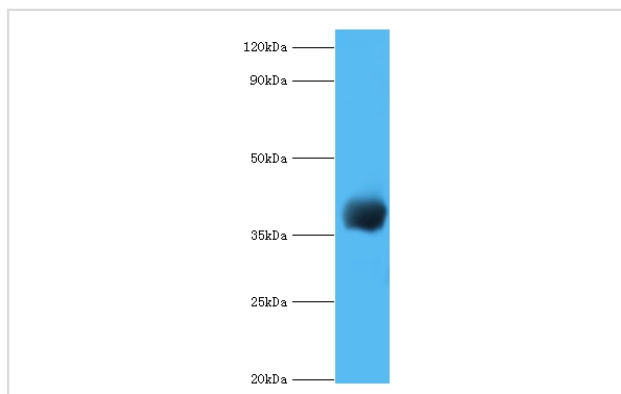
Description

Product Name	cpg2 Polyclonal Antibody
Host Species	Rabbit
Clonality	Polyclonal
Purification	Caprylic Acid Ammonium Sulfate Precipitation purified
Applications	WB
Species Reactivity	Pseudomonas sp
Specificity	The antibody detects endogenous level of total cpg2 polyclonal antibody.
Immunogen Type	protein
Immunogen Description	Recombinant Pseudomonas sp.Carboxypeptidase G2 protein
Target Name	cpg2
Other Names	CPDG2, Folate hydrolase G2, Glutamate carboxypeptidase, Pteroylmonoglutamic acid hydrolase G2, Glucarpidase, cpg2
Accession No.	Swiss-Prot#: P06621
Uniprot	P06621
Calculated MW	38kd
Formulation	Preservative: 0.03% Proclin 300 Constituents: 50% Glycerol, 0.01M PBS, PH 7.4
Storage	Store at -20°C

Application Details

Western blotting: □ 1:500 - 1:1000

Images



All lanes: Carboxypeptidase G2 antibody at 2ug/ml+recombinant Carboxypeptidase G2 protein at 0.5ug secondary
Goat polyclonal to rabbit at 1/10000 dilution
predicted band size :38kDa
observed band size :38kDa

Background

Catalyzes the hydrolysis of reduced and non-reduced folates to pteroates and L-glutamate. This enzyme has a broad specificity.

References

[1]"Crystal structure of carboxypeptidase G2, a bacterial enzyme with applications in cancer therapy." Rowsell S., Pauptit R.A., Tucker A.D., Melton R.G., Blow D.M., Brick P. Structure 5:337-347(1997).

Note: This product is for in vitro research use only