

ENPP2 Polyclonal Antibody

Catalog No: #42644

Orders: order@signalwayantibody.comSupport: tech@signalwayantibody.com

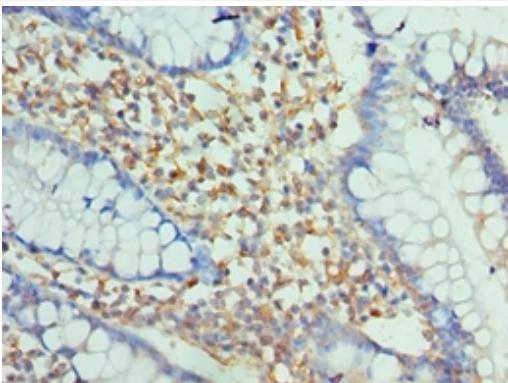
Description

Product Name	ENPP2 Polyclonal Antibody
Host Species	Rabbit
Clonality	Polyclonal
Purification	Antigen Affinity Purified
Applications	IHC
Species Reactivity	Hu
Specificity	The antibody detects endogenous level of total ENPP2 polyclonal antibody.
Immunogen Type	protein
Immunogen Description	Recombinant human Ectonucleotide pyrophosphatase/phosphodiesterase family member 2 protein (564-863aa)
Target Name	ENPP2
Other Names	E-NPP 2, Autotaxin, Extracellular lysophospholipase D, LysoPLD, ENPP2, ATX, PDNP2
Accession No.	Swiss-Prot#: Q13822
Uniprot	Q13822
GeneID	5168;
Concentration	1.0mg/mL
Formulation	PBS with 0.02% sodium azide, 50% glycerol, pH7.3.
Storage	Store at -20°C

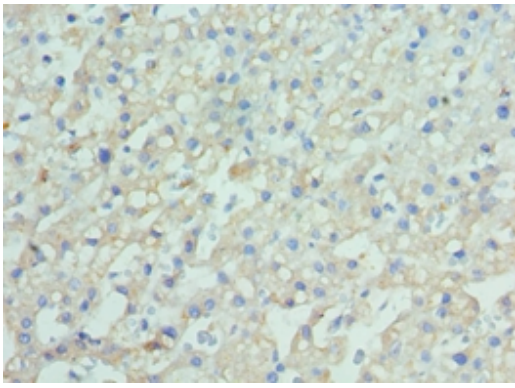
Application Details

Immunohistochemistry: 1:20 - 1:200

Images



Immunohistochemical analysis of paraffin-embedded human small intestine using #42644 at dilution of 1:100.



Immunohistochemical analysis of paraffin-embedded human liver cancer using #42644 at dilution of 1:100.

Background

Hydrolyzes lysophospholipids to produce lysophosphatidic acid (LPA) in extracellular fluids. Major substrate is lysophosphatidylcholine. Also can act on sphingosylphosphorylcholine producing sphingosine-1-phosphate, a modulator of cell motility. Can hydrolyze, in vitro, bis-pNPP, to some extent pNP-TMP, and barely ATP. Involved in several motility-related processes such as angiogenesis and neurite outgrowth. Acts as an angiogenic factor by stimulating migration of smooth muscle cells and microtubule formation. Stimulates migration of melanoma cells, probably via a pertussis toxin-sensitive G protein. May have a role in induction of parturition. Possible involvement in cell proliferation and adipose tissue development. Tumor cell motility-stimulating factor.

References

[1]Structural basis of substrate discrimination and integrin binding by autotaxin." Hausmann J., Kamtekar S., Christodoulou E., Day J.E., Wu T., Fulkerson Z., Albers H.M., van Meeteren L.A., Houben A.J., van Zeijl L., Jansen S., Andries M., Hall T., Pegg L.E., Benson T.E., Kasiem M., Harlos K., Kooi C.W. Perrakis A.Nat. Struct. Mol. Biol. 18:198-204(2011). [2]Potential involvement of adipocyte insulin resistance in obesity-associated up-regulation of adipocyte lysophospholipase D/autotaxin expression." Boucher J., Quilliot D., Pradere J.P., Simon M.F., Gres S., Guigne C., Prevot D., Ferry G., Boutin J.A., Carpenne C., Valet P., Saulnier-Blache J.S.Diabetologia 48:569-577(2005). [3]Autotaxin (NPP-2), a metastasis-enhancing mitogen, is an angiogenic factor." Nam S.W., Clair T., Kim Y.S., McMarlin A., Schiffmann E., Liotta L.A., Stracke M.L. Cancer Res. 61:6938-6944(2001).

Note: This product is for in vitro research use only