

SSX2 Polyclonal Antibody

Catalog No: #42646

Orders: order@signalwayantibody.com

Support: tech@signalwayantibody.com

Description

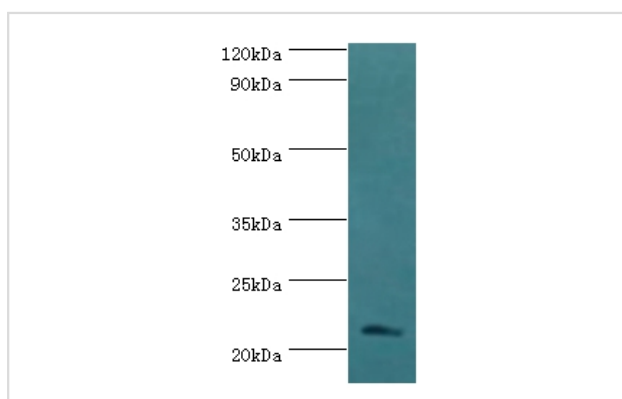
Product Name	SSX2 Polyclonal Antibody
Host Species	Rabbit
Clonality	Polyclonal
Purification	Antigen Affinity Purified
Applications	WB
Species Reactivity	Hu
Specificity	The antibody detects endogenous level of total SSX2 polyclonal antibody.
Immunogen Type	protein
Immunogen Description	Recombinant human Protein SSX2 protein(1-188aa)
Target Name	SSX2
Other Names	Cancer/testis antigen 5.2, CT5.2, Synovial sarcoma, X breakpoint 2, Tumor antigen HOM-MEL-40, SSX2, SSX2A, SSX2B
Accession No.	Swiss-Prot#: Q16385
Uniprot	Q16385
GeneID	6757;727837;
Calculated MW	22kd
Concentration	1.0mg/mL
Formulation	PBS with 0.02% sodium azide, 50% glycerol, pH7.3.
Storage	Store at -20°C

Application Details

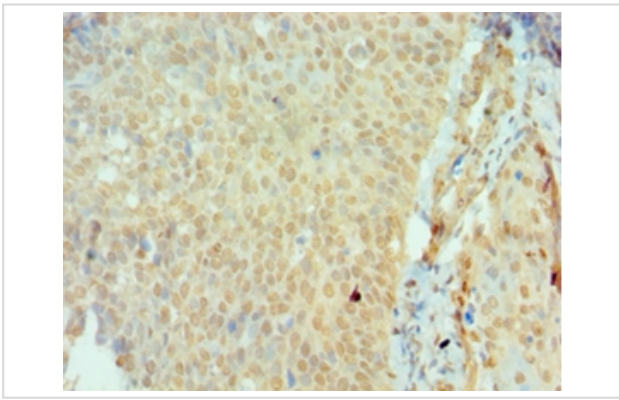
Western blotting: □1:500 - 1:1000

Immunohistochemistry: 1:20 - 1:200

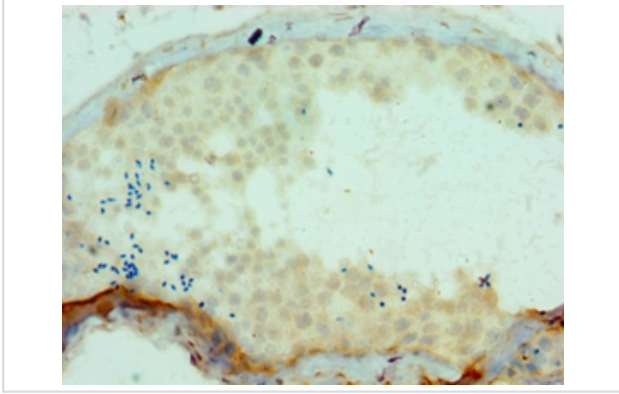
Images



All lanes: Protein SSX2 antibody at 2ug/ml+MDA-MB-231 whole cell lysate
secondary
Goat polyclonal to rabbit at 1/10000 dilution
predicted band size :22kDa
observed band size :22kDa



Immunohistochemical analysis of paraffin-embedded human cervical cancer using #42646 at dilution of 1:100.



Immunohistochemical analysis of paraffin-embedded human testis using #42646 at dilution of 1:100.

Background

Could act as a modulator of transcription.

References

[1]The cancer-related protein SSX2 interacts with the human homologue of a Ras-like GTPase interactor, RAB3IP, and a novel nuclear protein, SSX2IP." de Bruijn D.R.H., dos Santos N.R., Kater-Baats E., Thijssen J., van den Berk L., Stap J., Balemans M., Schepens M., Merx G., van Kessel A.G. *Genes Chromosomes Cancer* 34:285-298(2002). [2]Molecular diagnosis of synovial sarcoma and characterization of a variant SYT-SSX2 fusion transcript." Fligman I., Lonardo F., Jhanwar S.C., Gerald W.L., Woodruff J., Ladanyi M. *Am. J. Pathol.* 147:1592-1599(1995). [3]Identification of novel genes, SYT and SSX, involved in the t(X;18)(p11.2;q11.2) translocation found in human synovial sarcoma." Clark J., Rocques P.J., Crew A.J., Gill S., Shipley J., Chan A.M.-L., Gusterson B.A., Cooper C.S. *Nat. Genet.* 7:502-508(1994).

Note: This product is for in vitro research use only