

## EFTUD2 Polyclonal Antibody

Catalog No: #42648

Orders: order@signalwayantibody.com

Support: tech@signalwayantibody.com

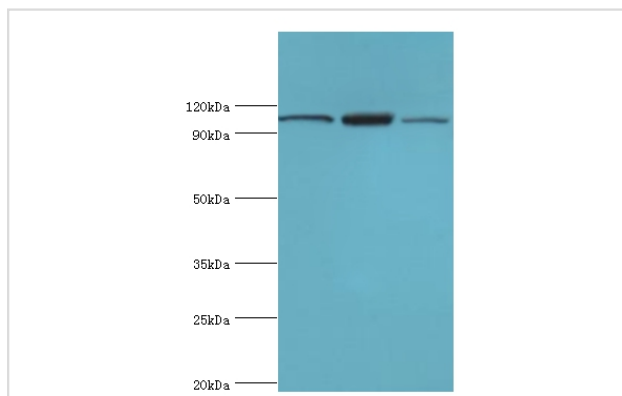
## Description

Product Name	EFTUD2 Polyclonal Antibody
Host Species	Rabbit
Clonality	Polyclonal
Purification	Antigen Affinity Purified
Applications	WB
Species Reactivity	Hu
Specificity	The antibody detects endogenous level of total EFTUD2 polyclonal antibody.
Immunogen Type	protein
Immunogen Description	Recombinant human 116 kDa U5 small nuclear ribonucleoprotein component protein (1-205aa)
Target Name	EFTUD2
Other Names	Elongation factor Tu GTP-binding domain-containing protein 2, SNU114 homolog, hSNU114, U5 snRNP-specific protein, 116 kDa, U5-116 kDa, EFTUD2, KIAA0031, SNRP116
Accession No.	Swiss-Prot#: Q9GZT9
Uniprot	Q9GZT9
GeneID	54583;
Calculated MW	109kd
Concentration	1.0mg/mL
Formulation	PBS with 0.02% sodium azide, 50% glycerol, pH7.3.
Storage	Store at -20°C

## Application Details

Western blotting: □1:500 - 1:5000

## Images



All lanes:116 kDa U5 small nuclear ribonucleoprotein component antibody at 3ug/ml  
 Lane 1:Hela whole cell lysate  
 Lane 2:293T whole cell lysate  
 Lane 3:NIH3T3 whole cell lysate  
 secondary  
 Goat polyclonal to rabbit at 1/10000 dilution  
 predicted band size :109kDa  
 observed band size :109kDa

## Background

Component of the U5 snRNP and the U4/U6-U5 tri-snRNP complex required for pre-mRNA splicing. Binds GTP.

## References

---

[1]"Haploinsufficiency of a spliceosomal GTPase encoded by EFTUD2 causes mandibulofacial dysostosis with microcephaly."Lines M.A., Huang L., Schwartzenruber J., Douglas S.L., Lynch D.C., Beaulieu C., Guion-Almeida M.L., Zechi-Ceide R.M., Gener B., Gillessen-Kaesbach G., Nava C., Baujat G., Horn D., Kini U., Caliebe A., Alanay Y., Utine G.E., Lev D. Boycott K.M.Am. J. Hum. Genet. 90:369-377(2012). [2]"Comparative large-scale characterisation of plant vs. mammal proteins reveals similar and idiosyncratic N-alpha acetylation features."Bienvenut W.V., Sumpton D., Martinez A., Lilla S., Espagne C., Meinnel T., Giglione C.Mol. Cell. Proteomics 11:M111.015131-M111.015131(2012). [3]"System-wide temporal characterization of the proteome and phosphoproteome of human embryonic stem cell differentiation."Rigbolt K.T., Prokhorova T.A., Akimov V., Henningsen J., Johansen P.T., Kratchmarova I., Kassem M., Mann M., Olsen J.V., Blagoev B.Sci. Signal. 4:RS3-RS3(2011).

---

Note: This product is for in vitro research use only