

Protein FAM160B1 Polyclonal Antibody

Catalog No: #42657

Orders: order@signalwayantibody.comSupport: tech@signalwayantibody.com

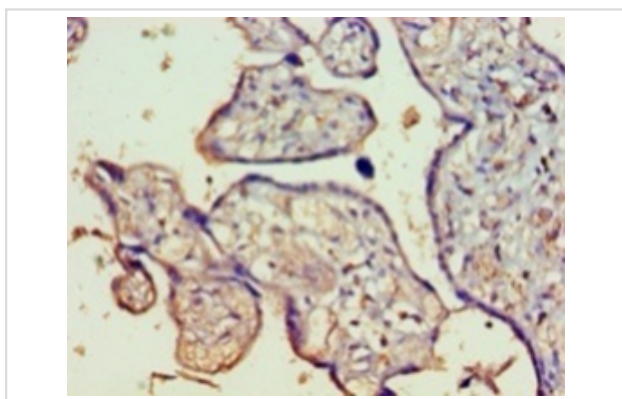
Description

Product Name	Protein FAM160B1 Polyclonal Antibody
Host Species	Rabbit
Clonality	Polyclonal
Purification	Caprylic Acid Ammonium Sulfate Precipitation purified
Applications	IHC
Species Reactivity	Hu
Specificity	The antibody detects endogenous level of total Protein FAM160B1 polyclonal antibody.
Immunogen Type	protein
Immunogen Description	Recombinant human Protein FAM160B1 proteinB£B"1-738aaB£B©
Target Name	Protein FAM160B1
Other Names	FAM160B1, KIAA1600
Accession No.	Swiss-Prot#: Q5W0V3
Uniprot	Q5W0V3
GeneID	57700;
Formulation	Preservative: 0.03% Proclin 300 Constituents: 50% Glycerol, 0.01M PBS, PH 7.4
Storage	Store at -20°C

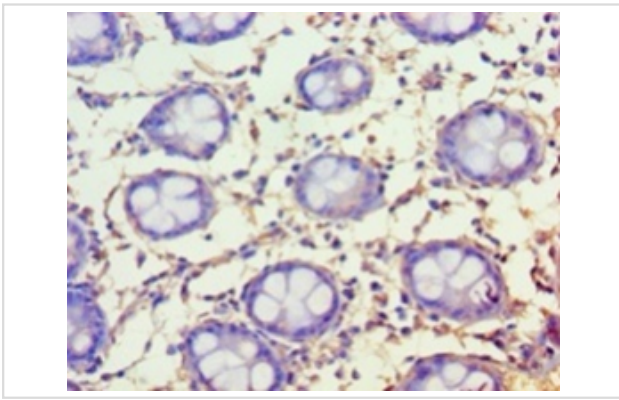
Application Details

Immunohistochemistry: 1:20 - 1:200

Images



Immunohistochemical analysis of paraffin-embedded human placenta tissue using #42657 at dilution of 1:100.



Immunohistochemical analysis of paraffin-embedded human rectum tissue using #42657 at dilution of 1:100.

References

[1]"Construction of expression-ready cDNA clones for KIAA genes: manual curation of 330 KIAA cDNA clones." Nakajima D., Okazaki N., Yamakawa H., Kikuno R., Ohara O., Nagase T. *DNA Res.* 9:99-106(2002). [2]"Prediction of the coding sequences of unidentified human genes. XVIII. The complete sequences of 100 new cDNA clones from brain which code for large proteins in vitro." Nagase T., Kikuno R., Nakayama M., Hirose M., Ohara O. *DNA Res.* 7:273-281(2000). [3]"The status, quality, and expansion of the NIH full-length cDNA project: the Mammalian Gene Collection (MGC)." The MGC Project Team *Genome Res.* 14:2121-2127(2004) .

Note: This product is for in vitro research use only