

LDLRAP1 Polyclonal Antibody

Catalog No: #42658

Orders: order@signalwayantibody.com

Support: tech@signalwayantibody.com

Description

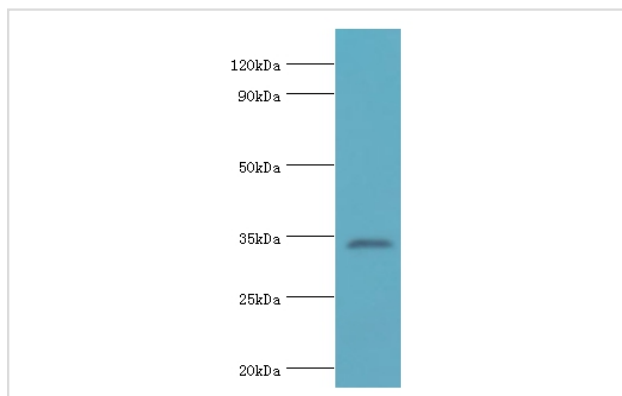
Product Name	LDLRAP1 Polyclonal Antibody
Host Species	Rabbit
Clonality	Polyclonal
Purification	Antigen Affinity Purified
Applications	WB IHC
Species Reactivity	Hu Ms
Specificity	The antibody detects endogenous level of total LDLRAP1 polyclonal antibody.
Immunogen Type	protein
Immunogen Description	Recombinant human Low density lipoprotein receptor adapter protein 1 protein (59-308aa)
Target Name	LDLRAP1
Other Names	Autosomal recessive hypercholesterolemia protein, LDLRAP1, ARH
Accession No.	Swiss-Prot#: Q5SW96
Uniprot	Q5SW96
GeneID	26119;
Calculated MW	34kd
Concentration	1.0mg/mL
Formulation	PBS with 0.02% sodium azide, 50% glycerol, pH7.3.
Storage	Store at -20°C

Application Details

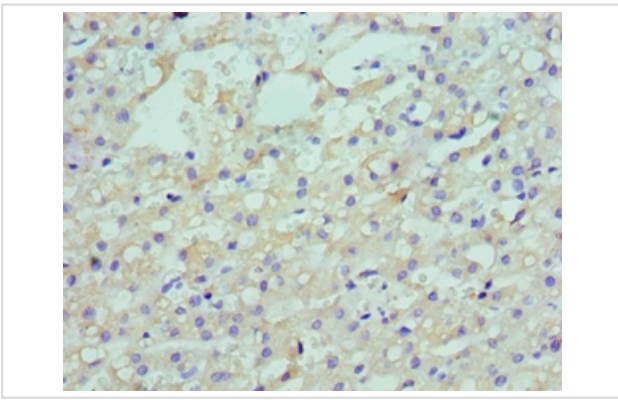
Western blotting: □ 1:500 - 1:2000

Immunohistochemistry: 1:20 - 1:200

Images



All lanes: Low density lipoprotein receptor adapter protein 1 antibody at 4ug/ml+mouse liver tissue secondary
Goat polyclonal to rabbit at 1/10000 dilution
predicted band size :34kDa
observed band size :34kDa



Immunohistochemical analysis of paraffin-embedded human liver cancer using #42658 at dilution of 1:100.

Background

Adapter protein (clathrin-associated sorting protein (CLASP)) required for efficient endocytosis of the LDL receptor (LDLR) in polarized cells such as hepatocytes and lymphocytes, but not in non-polarized cells (fibroblasts). May be required for LDL binding and internalization but not for receptor clustering in coated pits. May facilitate the endocytosis of LDLR and LDLR-LDL complexes from coated pits by stabilizing the interaction between the receptor and the structural components of the pits. May also be involved in the internalization of other LDLR family members. Binds to phosphoinositides, which regulate clathrin bud assembly at the cell surface.

References

[1]"Molecular mechanisms of autosomal recessive hypercholesterolemia." Wilund K.R., Yi M., Campagna F., Arca M., Zuliani G., Fellin R., Ho Y.K., Garcia J.V., Hobbs H.H., Cohen J.C. *Hum. Mol. Genet.* 11:3019-3030(2002). [2]"The full-ORF clone resource of the German cDNA consortium." Bechtel S., Rosenfelder H., Duda A., Schmidt C.P., Ernst U., Wellenreuther R., Mehrle A., Schuster C., Bahr A., Bloecker H., Heubner D., Hoerlein A., Michel G., Wedler H., Koehrer K., Ottenwaelder B., Poustka A., Wiemann S., Schupp I. *BMC Genomics* 8:399-399(2007). [3]"ARH is a modular adaptor protein that interacts with the LDL receptor, clathrin, and AP-2." He G., Gupta S., Yi M., Michaely P., Hobbs H.H., Cohen J.C. *J. Biol. Chem.* 277:44044-44049(2002).

Note: This product is for in vitro research use only