

WD repeat-containing and planar cell polarity effector protein fritz homolog Polyclonal Antibody

Catalog No: #42662

Orders: order@signalwayantibody.comSupport: tech@signalwayantibody.com

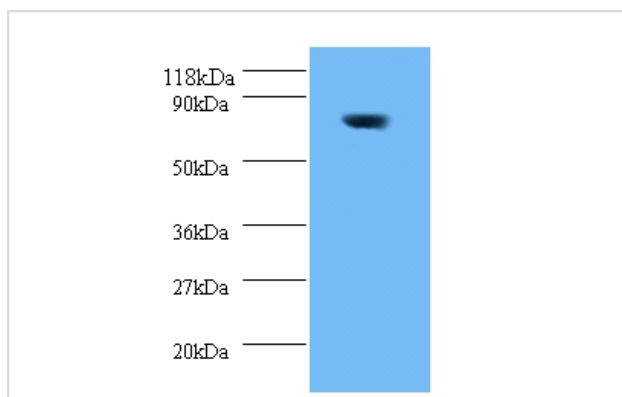
Description

Product Name	WD repeat-containing and planar cell polarity effector protein fritz homolog Polyclonal Antibody
Host Species	Rabbit
Clonality	Polyclonal
Purification	Caprylic Acid Ammonium Sulfate Precipitation purified
Applications	WB
Species Reactivity	Ms
Specificity	The antibody detects endogenous level of total WD repeat-containing and planar cell polarity effector protein fritz homolog polyclonal antibody.
Immunogen Type	protein
Immunogen Description	Recombinant Mouse WD repeat-containing and planar cell polarity effector protein fritz homolog protein
Target Name	WD repeat-containing and planar cell polarity effector prote
Other Names	Homolog-13, WD repeat-containing and planar cell polarity effector protein, Wdpcp
Accession No.	Swiss-Prot#: Q8C456
Uniprot	Q8C456
GeneID	216560;
Calculated MW	82kd
Formulation	Preservative: 0.03% Proclin 300 Constituents: 50% Glycerol, 0.01M PBS, PH 7.4
Storage	Store at -20°C

Application Details

Western blotting: □1:500 - 1:1000

Images



All lanes: WD repeat-containing and planar cell polarity effector protein fritz homolog antibody at 2ug/ml+mouse brain tissue
 SecondaryGoat polyclonal to Rabbit IgG at 1/10000 dilution
 Predicted band size:82kDa
 Observed band size:82 kDa

Background

Probable effector of the planar cell polarity signaling pathway which regulates the septin cytoskeleton in both ciliogenesis and collective cell

movements By similarity.

References

[1]Comparative transcription map of the wobbler critical region on mouse chromosome 11 and the homologous region on human chromosome 2p13-14.Fuchs S., Resch K., Thiel C., Ulbrich M., Platzer M., Jockusch H., Schmitt-John T.BMC Genet. 3:14-14(2002) [2]Th

Note: This product is for in vitro research use only