

BCL7C Polyclonal Antibody

Catalog No: #42666

Orders: order@signalwayantibody.comSupport: tech@signalwayantibody.com

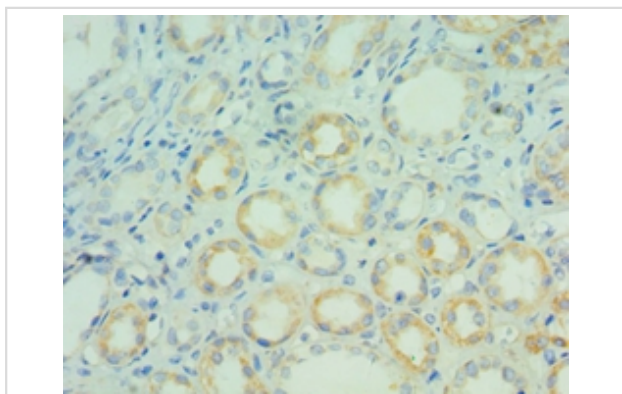
Description

Product Name	BCL7C Polyclonal Antibody
Host Species	Rabbit
Clonality	Polyclonal
Purification	Antigen Affinity purified
Applications	IHC
Species Reactivity	Hu
Specificity	The antibody detects endogenous level of total BCL7C polyclonal antibody.
Immunogen Type	protein
Immunogen Description	Recombinant human B-cell CLL/lymphoma 7 protein family member C protein (58-217aa)
Target Name	BCL7C
Other Names	BCL7C
Accession No.	Swiss-Prot#: Q8WUZ0
Uniprot	Q8WUZ0
GeneID	9274;
Concentration	1.0mg/mL
Formulation	PBS with 0.02% sodium azide, 50% glycerol, pH7.3.
Storage	Store at -20°C

Application Details

Immunohistochemistry: 1:20 - 1:200

Images



Immunohistochemical analysis of paraffin-embedded human kidney using #42666 at dilution of 1:100.

Background

May play an anti-apoptotic role.

References

- [1]"System-wide temporal characterization of the proteome and phosphoproteome of human embryonic stem cell differentiation."Rigbolt K.T., Prokhorova T.A., Akimov V., Henningsen J., Johansen P.T., Kratchmarova I., Kassem M., Mann M., Olsen J.V., Blagoev B. *Sci. Signal.* 4:RS3-RS3(2011). [2]"Quantitative phosphoproteomics reveals widespread full phosphorylation site occupancy during mitosis."Olsen J.V., Vermeulen M., Santamaria A., Kumar C., Miller M.L., Jensen L.J., Gnad F., Cox J., Jensen T.S., Nigg E.A., Brunak S., Mann M. *Sci. Signal.* 3:RA3-RA3(2010). [3]"Quantitative phosphoproteomic analysis of T cell receptor signaling reveals system-wide modulation of protein-protein interactions."Mayya V., Lundgren D.H., Hwang S.-I., Rezaul K., Wu L., Eng J.K., Rodionov V., Han D.K.*Sci. Signal.* 2:RA46-RA46(2009).
-

Note: This product is for in vitro research use only